



Smart solutions.
Strong relationships.

L M O O R S

Price List

(Effective From 17-03-2012)
(Price List No LTM/006 Re 1 Dated 17.03.12)

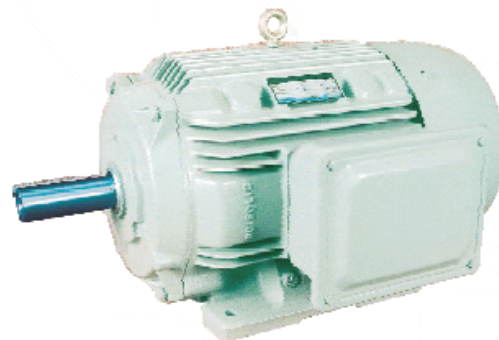
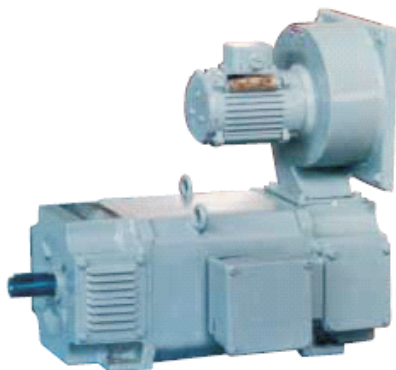


AC MOTORS

ALTERNATORS

DC MOTORS

**SPECIAL FEATURES
OFFERED**



Regd. Office : CG House, 6th Floor, Dr. Annie Besant Road, Worli, Mumbai - 400 030.

NEW ADDITION !!!!
APEX SERIES
IE2 Motors




Apex Series
IE2 Efficiency motors



PRICE LIST FOR AC MOTORS

(Effective from 17.03.12)

(Price List No LTM/006 Rev 1 Dated 17.03.12)

INDE

SR. No.	TITLES	PAGE No.
1)	PRICE LIST - SPECIAL FEATURES OFFERED FOR AC MOTORS	1-8
2)	PRICE LIST - APEX SERIES IE2 TEFC SCR MOTORS	9-12
3)	PRICE LIST - TEFC SCR EFFICIENCY LEVEL 2 FOOT MOUNTED	13-14
4)	PRICE LIST - TEFC SCR EFFICIENCY LEVEL 2 FLANGE MOUNTED	15-16
5)	PRICE LIST - TEFC SCR EFFICIENCY LEVEL 1 FOOT MOUNTED	17-18
6)	PRICE LIST - TEFC SR FOOT MOUNTED	19-20
7)	PRICE LIST - TEFC BRAKE S1 DUTY	21
8)	PRICE LIST - TEFC BRAKE S4 DUTY	22
9)	PRICE LIST - SPDP SR FOOT MOUNTED	23-24
10)	PRICE LIST - FLP SCR FOOT MOUNTED	25-26
11)	PRICE LIST - FLP SCR FLANGE MOUNTED	27-28
12)	RATING LIST - FLP MOTORS IN E355LX FRAME	29
13)	PRICE LIST - TEFC CRANE DUTY MOTORS	30
14)	PRICE LIST - TEXTILE	31-32
15)	PRICE LIST - DOUBLE CIRCUIT	33
16)	PRICE LIST - ALTERNATORS	34-36
17)	PRICE LIST FOR DC MOTORS	37-38
18)	TERMS AND CONDITIONS	39

AC MOTORS

SPECIAL FEATURES

PRICE LIST FOR CASH EXTRAS FOR SPECIAL FEATURES OFFERED FOR AC MOTORS

COMMERCIAL

Price List No LTM/006 Rev 1 Dated 17.03.12

Sr. No	Description	Cash Extras
1	<p>Motors dispatch under Nil Excise Duty</p> <ol style="list-style-type: none"> 1. Dispatch under CT3 bond 2. Dispatch under any government project notification (Please get a prior confirmation for cash extra and suitability of notification and format of certificate from Division 3. Dispatch under CT1 and ARE1 forms <p>In the event of exemption of excise duty under any of the above, approved ARE3 or rewarehousing certificate or proof of export or any documents as required by excise authority is required within 60 days of dispatch, failure to furnish this, the excise duty will be debited to customer/dealer along with the interest and penalty</p>	<p>6 % As applicable - Please get a confirmation from Division Nil</p>

Sr. No	Description	Cash Extras
ELECTRICAL FEATURES		
1.	VOLTAGE	
	<p>Base voltage between 415 V Other than above voltage Dual voltage: 220Δ / 380 Y or 380Δ / 660 Y & (1: $\sqrt{3}$ ratio) Dual voltage : with ratio 1:2 eg. 220 / 440 Triple voltage : (220/380/440)</p>	<p>3% 3% 3% 3%</p>
2.	FREQUENCY Base frequency of 50 h or 60 h 50/60 H motors for export	<p>No No</p>
3.	<p>VARIABLE VOLTAGE /VARIABLE FREQUENCY OPERATED MOTORS: OR/AND VACCUM PRESSURE IMPREGNATION TREATMENT(VPI) (ALSO KNOWN AS POWER HOUSE TREATMENT)</p> <p>63 to 132 160 to 250 280 & above</p> <p>A) Variable torque operation - Standard frame sizes suitable for following specifications: Variable torque operation, Type of application: pump/fan/blower Load torque speed curve : parabolic. Speed range =10% to 100% Harmonic contents < 5% & temperature rise limited to class F rise</p> <p>B) Constant torque operation Frame size suitable for following specifications Speed range 50% to 100 % , Temperature rise limited to class F rise Typical applications- Printing, Packaging , Paper industry or as per customer requirement Frame size logic Double of kW rating E.g. 11kW 4 pole Motor 11kW x 2 = 22kW Hence frame size 180 L Refer circular by Design Dept/ write up in Catalogue No LTM/Cat/01/Dec 2009</p>	<p>3% sub to max Rs. 3000/- 5% sub to max Rs. 3500/- Nil</p>

1) All % (per-centage)figures are to be loaded on list price. 2) All Rs. figures are to be added on nett price,
3) Inspection charges are subject to excise & taxes

AC MOTORS

SPECIAL FEATURES

PRICE LIST FOR CASH EXTRAS FOR SPECIAL FEATURES OFFERED FOR AC MOTORS

4.	9 LEAD/ 12 LEADS (Frame ND 90 to ND 250)	3 %
5.	AMBIENT TEMPERATURE -30 TO + 65°C.	List price as per selected frame.
6.	Temperature rise as per class F: For (ambient + rise)= 145°C, output can be uprated by 10% eg. Output= 55 kW in frame ND250M with amb+rise =120°C. With amb+rise=145°C, maximum output in ND250M = 55*1.1 = 60.5 (Not applicable for type 'e' & type 'n' motors.) Insulation class ' H '	No 15 %
7.	NON STANDARD RV/RA FOR SLIPRING MOTORS (PI take prior Division confirmation for RV/RA)	5 %
8.	Efficiency level 1 Motors Frames 63 to 160 180 to 250 280 315 to 355 400 / 450	Refer separate price list ref LTM/006 R1 In case not in price list, please refer following 15% 10% 5% 1% Refer to Division
1	MECHANICAL FEATURES: MOUNTING A) All types of mounting other than B3 for all types of motors Frames 63 to 160 Frames 180 to 400	Refer price list LTM/006 R1 3% 5%
2	FORCED COOLING ARRANGEMENT(FRAME 200 AND ABOVE TEFC ONLY) ND 200 TO 225 ND 250 ND 280 ND 315 S/M/L ND 355 / 400 ND 450	Rs. 14500/- Rs. 22000/- Rs. 27000/- Rs. 30000/- Rs. 49000/- Rs. 57000/-
3	CI FANS (160 & Above)	No Extra
4	SPECIAL FIXING DIMENSIONS OTHER THAN IS 1231/2223. To be offered for TEFC SCR/ SR motors for frame 160 and above. (shall be offered with fabricated stator body) Please refer to division for concurrence	15% of ALP delivery 8 weeks extra to SDT

1) All % (per-centage)figures are to be loaded on list price.2)All Rs figures are to be added on nett price,
3) Inspection charges are subject to excise & taxes

AC MOTORS

SPECIAL FEATURES

PRICE LIST FOR CASH EXTRAS FOR SPECIAL FEATURES OFFERED FOR AC MOTORS

5	<p>NEMA BODY MOTORS (Only for dimensions, performance as per IEC)</p> <table border="0"> <thead> <tr> <th>IEC Frame</th> <th>NEMA Frame</th> <th>IEC Frame</th> <th>NEMA Frame</th> </tr> </thead> <tbody> <tr> <td>90S</td> <td>END 143T</td> <td>180M</td> <td>END 284T</td> </tr> <tr> <td>90L</td> <td>END 145T</td> <td>180L</td> <td>END 286T</td> </tr> <tr> <td>112M</td> <td>END 184T</td> <td>200L</td> <td>END 324T</td> </tr> <tr> <td>132S</td> <td>END 213T</td> <td>225S</td> <td>END 364T</td> </tr> <tr> <td>132M</td> <td>END 215T</td> <td>225M</td> <td>END 365T</td> </tr> <tr> <td>160M</td> <td>END 254T</td> <td>250M</td> <td>END 405T</td> </tr> <tr> <td>160L</td> <td>END 256T</td> <td>280S</td> <td>END 444T</td> </tr> <tr> <td></td> <td></td> <td>280M</td> <td>END 447T</td> </tr> </tbody> </table>	IEC Frame	NEMA Frame	IEC Frame	NEMA Frame	90S	END 143T	180M	END 284T	90L	END 145T	180L	END 286T	112M	END 184T	200L	END 324T	132S	END 213T	225S	END 364T	132M	END 215T	225M	END 365T	160M	END 254T	250M	END 405T	160L	END 256T	280S	END 444T			280M	END 447T	10 % over equivalent IEC Motors of same KW and Polarity
IEC Frame	NEMA Frame	IEC Frame	NEMA Frame																																			
90S	END 143T	180M	END 284T																																			
90L	END 145T	180L	END 286T																																			
112M	END 184T	200L	END 324T																																			
132S	END 213T	225S	END 364T																																			
132M	END 215T	225M	END 365T																																			
160M	END 254T	250M	END 405T																																			
160L	END 256T	280S	END 444T																																			
		280M	END 447T																																			
6	<p>Fabricated stator body but fixing dimensions as per IS for frame 160 & above (ND frames only)</p>	15% of ALP Delivery 8 weeks extra to SDT																																				
7	<p>CUSTOM SIZE FABRICATED TERMINAL BOX One size higher box can be supplied for TEFC SCR motors as per table below For higher cable size than below please refer to division.</p> <table border="0"> <thead> <tr> <th rowspan="2">Frame</th> <th colspan="2">Maximum cable size</th> </tr> <tr> <th>With standard T. Box</th> <th>With one size higher T. Box</th> </tr> </thead> <tbody> <tr> <td>160-200</td> <td>2 X 3C X 25</td> <td>2 X 3C X 95</td> </tr> <tr> <td>225-280</td> <td>2 X 3C X 95</td> <td>2 X 3C X 240</td> </tr> <tr> <td>315 S/M</td> <td>2 X 3C X 240</td> <td>4 X 3C X 300</td> </tr> <tr> <td>315L</td> <td>2 X 3CX 240</td> <td>4 X 3C X 300</td> </tr> </tbody> </table>	Frame	Maximum cable size		With standard T. Box	With one size higher T. Box	160-200	2 X 3C X 25	2 X 3C X 95	225-280	2 X 3C X 95	2 X 3C X 240	315 S/M	2 X 3C X 240	4 X 3C X 300	315L	2 X 3CX 240	4 X 3C X 300	3% ALP subject to Max 7400/- Rs. extra per motor.																			
Frame	Maximum cable size																																					
	With standard T. Box	With one size higher T. Box																																				
160-200	2 X 3C X 25	2 X 3C X 95																																				
225-280	2 X 3C X 95	2 X 3C X 240																																				
315 S/M	2 X 3C X 240	4 X 3C X 300																																				
315L	2 X 3CX 240	4 X 3C X 300																																				
8	<p>DOUBLE TERMINAL BOX FOR SLIPRING MOTORS Frames 315 & 355 Std TEFC Frame 400 TEFC</p>	Rs. 5000/- Nil																																				
9	<p>FLYING LEADS (upto 1 meter & 6 leads), W/O T. Box Frames ND 160 to ND 400</p>	No																																				
10	<p>SPECIAL SHAFT EXTENSION Standard double shaft extension (DE/NDE identical) Non standard single /double shaft with diameter and length less than standard Dimensions (This feature is not offered in FLP SR and SPDP SR enclosures.) For D or E more than IS , please refer to division.</p> <p>Taper single shaft extension taper 1: 10 Taper double shaft extension taper 1: 10 For taper other than the above,</p> <p>Special shaft material EN 24 grade</p> <p>Stainless steel shaft (Upto & including 180 Frame)</p>	<p>5% 10%</p> <p>5% 10% Refer to Division</p> <p>10% extra price & extra delivery of 4 weeks.</p> <p>15% extra price & extra delivery of 4 weeks.</p>																																				

1) All % (per-centage)figures are to be loaded on list price. 2) All Rs. figures are to be added on nett price,
3) Inspection charges are subject to excise & taxes

PRICE LIST FOR CASH EXTRAS FOR SPECIAL FEATURES OFFERED FOR AC MOTORS

11	<p>SPECIAL BEARINGS Online greasable bearings for frame 160-225 (Our standard bearings are greased for life.) (To be agreed for projects only if Sealed bearings are not acceptable) Regreasable bearings are provided as a standard for frame 250 and above & C225M frame.</p> <p>C4 clearance bearings in frame 160-400</p> <p>Angular contact / axial thrust bearings for 160-355 frame. Please refer to division & please furnish axial thrust in kg & direction of axial thrust - toward/away from motor.</p>	<p>Rs. 900/- per motor 4 weeks extra delivery</p> <p>Rs. 3300/- per motor 10 Weeks extra del.</p>																		
12	<p>BEARING INSULATION ARRANGEMENT (ONLY ONE SIDE) FRAME 225 TO 250 FRAME 280 TO 315 M FRAME 355</p> <p>FOLLOWING TABLE FOR PRICES OF INSULATED BEARINGS</p> <table border="1" data-bbox="227 1005 900 1320"> <thead> <tr> <th>Bearing Type</th> <th>Price in Rs.</th> </tr> </thead> <tbody> <tr><td>6314</td><td>34000</td></tr> <tr><td>6315</td><td>34000</td></tr> <tr><td>6316</td><td>34000</td></tr> <tr><td>6318</td><td>29000</td></tr> <tr><td>6319</td><td>37000</td></tr> <tr><td>6321</td><td>82000</td></tr> <tr><td>6322</td><td>40000</td></tr> <tr><td>6326</td><td>87000</td></tr> </tbody> </table> <p>Refer catalogue for correlation of bearings with frame/polarity</p> <p>ROLLER BEARING ON DE SIDE FRAMES 160 TO 180 FRAMES 200 TO 250 FRAMES 280 TO 315 FRAMES 355 TO 400 Bearing si e other than standard: Please refer to division.</p>	Bearing Type	Price in Rs.	6314	34000	6315	34000	6316	34000	6318	29000	6319	37000	6321	82000	6322	40000	6326	87000	<p>Rs. 12000/- Rs. 14000/- Rs. 16000/-</p> <p>Rs. 1540/- Rs. 2860/- Rs. 4000/- Rs. 5000/-</p>
Bearing Type	Price in Rs.																			
6314	34000																			
6315	34000																			
6316	34000																			
6318	29000																			
6319	37000																			
6321	82000																			
6322	40000																			
6326	87000																			
13	<p>Degree of protection as per IS 4691-1968 IP 66 , IP65 for TEFC SCR motors in frame 160-315 (No certification and testing for above)</p>	5% of ALP.																		
14	<p>FAULT LEVEL : Agreed for maximum through fault level 50 kA for 0.25 sec. Please refer to division for higher fault level. (Charges include price for special terminal box and certification charges)</p>	Rs. 35000/-																		
15	<p>Tacho mounting arrangement for frame 160 - 400 TEFC SCR motors. For other frames refer to division</p> <p>FRAME 160 TO 280 FRAME 315 TO 400</p>	<p>Rs. 3000/- per motor Rs 3500/- per motor</p>																		

1) All % (per-centage)figures are to be loaded on list price. 2) All Rs. figures are to be added on nett price,
3) Inspection charges are subject to excise & taxes

AC MOTORS

SPECIAL FEATURES

PRICE LIST FOR CASH EXTRAS FOR SPECIAL FEATURES OFFERED FOR AC MOTORS

16	<p>Motors with brake : For TEFC SCR motors For motors with brake arrangement but without brake: For motors with brake arrangement & brake: Brake specifications: Brake type 14.448 Emco Len e DC failsafe brake with solid state rectifier Motor mounting : B3 or B5</p> <p>Soild state rectifier specification:</p> <p>A. 415 V AC TO 24 V DC B. 415 V AC TO 96 V DC C. 415 V AC TO 190 V DC</p> <table border="0"> <thead> <tr> <th>FRAME</th> <th>BRAKING TORQUE N-M</th> <th>BRAKE SIZE</th> </tr> </thead> <tbody> <tr> <td>ND160M/L</td> <td>150 N-M</td> <td>18</td> </tr> <tr> <td>ND180M/L</td> <td>360 N-M</td> <td>25</td> </tr> </tbody> </table> <p>ND 200L REFER TO DIVISION FOR TECHNICAL & COMMERCIAL OFFER Please furnish braking torque & required braking time to check suitability of shaft material.</p>	FRAME	BRAKING TORQUE N-M	BRAKE SIZE	ND160M/L	150 N-M	18	ND180M/L	360 N-M	25	<p>20% of ALP 20% of ALP plus price for brake as per table below</p> <p>extra price for brake Rs. 25500/- Rs. 32000/- Rs. 55000/-</p>
FRAME	BRAKING TORQUE N-M	BRAKE SIZE									
ND160M/L	150 N-M	18									
ND180M/L	360 N-M	25									
17	<p>Terminal box position : (for foot or foot cum flange mounted motors) Enclosure possible position from DE TEFC SCR/SR RHS,LHS, TOP FLAMEPROOF SCR -E160-E315M RHS/LHS FLAMEPROOF SCR- E315L TOP FLAMEPROOF SR -EW250-315M STATOR - RHS ROTOR - LHS FLAMEPROOF SR -EW315L STATOR - TOP ROTOR - RHS SPDP SCR/SR RHS / LHS (ND 250 MX, ND355LX, ND400LX, ND450LX TB TOP option not applicable)</p>	No									
18	<p>ANTICORROSIVE TREATMENT /PAINT For TEFC/SPDP SCR/SR motors Paint shades: 631 as per IS - 5. ACP 631/632 Flameproof, type 'e' & type 'n' motors are provided with epoxy paint of shade 631 as per IS -5 as a standard feature. Our standard painting procedure: Zinc chromate primer one coat + synthetic enamel paint Thickness 70 Microns For additional thickness upto 130 microns Paint shade other than above mentioned shade and RAL shades *For an other painting shade, material or procedure, please refer to division.</p>	<p>3% No 5% 5% of ALP subject to max Rs. 7000/-</p>									
19	<p>NOISE LEVEL As per IS 12065. < = 85 dB(A) @ 1 m at no load for 4 pole motors and above < = 90 dB(A) @ 1 m at no load for all 2 pole motors. For lower noise level please refer to division.</p>	No No									
20	<p>VIBRATION LEVEL Vibration level shall be as per normal class of IS 12075-1987.For any other value Please refer to division. Precesion class A Precesion class B</p>	10% 20%									
21	<p>JACKING OUT HOLES ON MOTOR FEET Jacking out holes & dowel pins on motor feet are provided for frame 225 & above.</p>	No extra									
22	<p>STAINLESS STEEL HARDWARE - Upto Frame 225 Frame 250 and Above</p>	Rs. 900- Rs. 1500/-									

1) All % (per-centage)figures are to be loaded on list price.2) All Rs. figures are to be added on nett price,
3) Inspection charges are subject to excise & taxes

AC MOTORS

SPECIAL FEATURES

PRICE LIST FOR CASH EXTRAS FOR SPECIAL FEATURES OFFERED FOR AC MOTORS

23	TOTALLY ENCLOSED MOTOR WITHOUT FAN: Deration factor = 0.5	ALP as per selected frame.
24	AIR STREAM RATED MOTOR: Totally enclosed motor cooled because of fan Directly mounted on motor shaft. Output as per TEFC motors	ALP as per TEFC frame.
25	Canopy (For motors with terminal box on RHS / LHS ONLY) Frames 80 to 132 Frames 160 to 200 Frames 225 to 250 Frames 280 to 315 Frames 355 to 400 FRP Canopy (with terminal box on RHS / LHS ONLY)	Rs. 1220/- Rs. 1540/- Rs. 2750/- Rs. 5000/- Rs. 6600/- 5% sub to max of Rs. 7700/-
26	ENCLOSURE Increased Safety type 'e' motors as per IS 6381 with anticorrosive paint Non sparking type 'N' motors as per IS 8789 with anti corrosive paint. (From 90 to 355 CI frames only) (Price basis- For selected frame size, highest Kw ALP to be taken as base) Pressurised Enclosure as per IS 7389: Frame P90 TO P132M Frame P160 to P200 Frames P225 to P315 Approval from certifying authority for pressurisedness shall be in customers' scope. Arrangement to pressurised enclosure with inert gas to be done by customer.	15% 7.5% Basic ALP of flameproof motors + Rs. 3300/- + Rs. 5000/- + Rs. 6600/-

27 HAZARDOUS AREA MOTORS THAT CAN BE OFFERED : FOR TYPE 'E' & TYPE 'N' MOTORS

ZONE	GAS GROUP	TEMPERATURE CLASS	FRAME
2	NA	T1,T2,T3	ND 90 TO ND 355L

FOR FLAMEPROOF MOTORS-INDIAN APPROVALS

ZONE	GAS GROUP	TEMPERATURE CLASS	FRAME
1	IIA, IIB I,IIA, IIB	T1,T2,T3,T4	E80 E90-E132
1	I,IIA,IIB	T1,T2,T3,T4	E160L TO E315L
1	IIC	T1,T2,T3,T4	NETT PRICE FOR IIC MOTOR = 1.40* ALP OF STD FLP Motor- No Discount Applicable Frames Covered E80 To E315M# & E355LX Terminal box will be on TOP only # E315M ONLY UPTO TEMP CLASS T3 ONLY

FOR FLAMEPROOF MOTORS- WITH BASEEFA/ATEX/IECEX APPROVALS

ZONE	GAS GROUP	TEMPERATURE CLASS	FRAME
1	IIA IIB	T1,T2,T3	35 % EXTRA OVER STANDARD FLAMEPROOF MOTORS FRAMES COVERED ARE E 80 TO E315 L (For these motors DPA software not to be used for documentation)

1)All % (per-centage)figures are to be loaded on list price.2)All Rs figures are to be added on nett price,
3) Inspection charges are subject to excise & taxes

AC MOTORS

SPECIAL FEATURES

PRICE LIST FOR CASH EXTRAS FOR SPECIAL FEATURES OFFERED FOR AC MOTORS

FOR PRESSURISED ENCLOSURE MOTORS

ZONE	GAS GROUP	TEMPERATURE CLASS	FRAME
1	IIC	T1,T2,T3	P90 TO P132M
1	IIC	T1,T2,T3,T4	P160L TO P315L

Please refer to comment for pressurised enclosure motors as per above.

SN	DESCRIPTION OF EXTRA FEATURE	CASH EXTRAS
28	INSULATION CLASS Class 'H' insulation For frame 63-132 For frame 160-400	15% 15%
29	MULTI SPEED MOTORS single tapped winding type with 2/4, 4/8,4/6,6/8 pole motors Dual speed motors with separate winding or polarity above 8 pole Dual speed motor with more than 2 speeds	10% additional price for higher polarity 17.5 % of higher price for among polarity 25% on ALP of highest polarity
30.	Motors with 10,12,16 pole Please refer to division	10% of Highest ALP for 8 pole motor in the Selected frame
31	CRANE DUTY MOTORS .:	As Per Price List LTM/006 R1 For Rating/Frames not covered in price lists please load 10% extra over identified Frame/Rating ALP
32	EPOXY GEL COAT	2 %
33.	CLEAN FLOW CONSTRUCTION for TEFC SCR textile motors Frames 90S to 132M Frames 160 to 200	As Per Price List

ACCESSORIES

1.	<p>SPACE HEATERS -</p> <p>Space heaters are terminated in auxiliary terminal box on top of main terminal box (Except for all FLP motors & TEFC motors in 160-180 for which heater terminals are terminated in main terminal box.) (Space heaters are provided as a standard feature for standard DDI TEFC SCR motors in frame 280 and above.) For frames 160 to 180 TEFC & FLP For frames 200 to 250 TEFC & FLP For frames 280 to 400 (TEFC) For frames 280 to 355 (FLP)- Space heater termination in the main terminal box</p> <p>Charges for separate auxiliary box No Space heaters will be provided for frames below 132 Space heater for ND132 frame (TEFC)</p>	<p>Rs. 1375/- Rs. 2750/- Nil Rs. 3960/- Rs. 2300/- Rs. 1000/-</p>
2.	<p>THERMISTORS (Without relays) 80 frames above varieties: PTC -110, PTC-130, PTC- 150 -3 nos per motor without relay 80 355 -6nos (PTC 130 - 3 nos & PTC 150 -3 nos) per motor without relay 160 - 355</p>	<p>Rs. 1980/- Rs. 3960/-</p>

1)All % (per-centage)figures are to be loaded on list price.2)All Rs figures are to be added on nett price,
3) Inspection charges are subject to excise & taxes

AC MOTORS

SPECIAL FEATURES

PRICE LIST FOR CASH EXTRAS FOR SPECIAL FEATURES OFFERED FOR AC MOTORS

3	RTD's 250 frames and above 6 Nos (2 Nos per phase)	Rs. 6500/-
4	BEARING TEMPERATURE DETECTOR (2 Nos.) ROD Type without wiring Frames 280 & above	Rs. 6500/-
5	Cable sealing box for group I for frame 160-200 flameproof motors. For 225-315 frame flameproof motors 1 No. S.Box is provided as standard. For second sealing box : For frame 90-132 (not available in frame 80.)	Rs. 1760/- Rs. 1980/- Rs.1540/-
6	FLP Plug and socket arrangement: (SAFEX Make) -30 Amps,600 volts -110 Amps,600 volts -150 Amps,600 volts	Rs. 18000 Rs. 21000 Rs. 26000
7	DOUBLE COMPRESSION GLANDS (Per Run of Cable) Upto frame 160 180 to 225 250 to 400 Space heater gland and thermisters glands # Compression glands suitable for gas group IIA IIB only # Supply of glands for Gas group IIC not in CGL scope of supply	Rs. 1200/- Rs. 2200/- Rs. 2900/- Rs. 900/-
8.	FINISHING AND PACKING Motor delivered in unpacked condition Motor delivered with only red oxide primer coat Seaworthy/export packing case for home market (Without fumigation certificate)	No reduction No reduction 5% subject to max of 5500/-
9	Additional nameplate	Rs. 300/-
10	Direction arrow plate	Rs 600/-

TESTING CHARGES

INSPECTION/TEST WITNESSING BY CUSTOMER/ CONSULTANT

Inspection arrangements and third party inspection charges are in customers scope. In addition following would be inspection charges for witnessing tests:

1	Routine testing per motor: Frames 63-160 Frames 180 to 250 Frames 280 to 400	Rs. 1400/- Rs. 2200/- Rs. 2950/-
2	Type testing per motor Frame 63-160 Frames 180 to 250 Frames 280 to 315 Frame 355 & 400 For 355 & 400 frame part load testing shall be done depending on test plant capacity.	Rs. 4900/- Rs. 7200/- Rs. 11000/- Rs. 14000/-
3	FLP Pressure test per motor Frame 80-160 Frames 180 to 315	Rs. 3000 Rs. 8000/-
4	IInd numeral IP55 test per motor (Prior confirmation from Division required)	Rs 5000/-
5	Testing with inverter drive (ERTL presence/witness charges extra to Customers account) ** As per norms entire batch requires joint testing hence charges required for total no of motors and not on sample basis, please quote extended delivery also accordingly- Please refer to Division in case of any query.	Rs. 55000/- per motor (ERTL presence / witness charges extra to Customers account ERTL personnel logistics to customers account)
6	DOCUMENTATION CHARGES (technical/commercial) documents for approval/submission Reproducible tracing copies for final submission. Marine motor documentation : please refer such enquiries to division.	Rs. 1500/- per rating Rs. 6000/- per rating Rs. 14,000/- per rating

Note : Should customer require any additional feature not covered here, kindly refer the same to Division

- 1)All % (per-centage)figures are to be loaded on list price.2)All Rs figures are to be added on nett price,
3) Inspection charges are subject to excise & taxes

AC MOTORS

IE2 MOTORS - FOOT MOUNTED



(Price List No LTM/006 Rev 1 Dated 17.03.12)

IE2

TOTALLY ENCLOSED FAN COOLED SQUIRREL CAGE 3 PH INDUCTION MOTORS-FOOT MOUNTED

Enclosure conforming to protection IP 55 Horizontal Foot Mounted (B3), continuously rated (S1) suitable for operation on 415+/- 10% V, 3 Phase 50Hz+/- 5% AC supply with ambient 50 C, Class "F" insulation with temperature rise limited to Class "B" and altitude less than 1000 m above m.s.l. Efficiency values are conforming to IS 12615:2011 IEC 60034-30-2008

OUTPUT		2 POLE : 3000 RPM		
KW	HP	FRAME	PRICE	EX.DUTY
0.37	0.50	GD71	9867	549
0.55	0.75	GD/NG80	10930	608
0.75	1.00	GD/NG80	11300	629
1.10	1.50	GD/NG80	12330	686
1.50	2.00	GD/NG90S	14130	786
2.20	3.00	GD/NG90L	18160	1010
3.00	4.00	GD/NG100L	21332	1186
3.70	5.00	GD/NG100L	22340	1243
5.50	7.50	GD/NG132S	36650	2038
7.50	10.00	GD/NG132S	37930	2110
11.00	15.00	ND160M	68230	3795
15.00	20.00	ND160M	79990	4449
18.50	25.00	ND160L	103840	5776
22.00	30.00	ND180M	110750	6160
30.00	40.00	ND200L	164740	9163
37.00	50.00	ND200L	200970	11178
45.00	60.00	ND225M	258650	14386
55.00	75.00	ND250M	348220	19368
75.00	100.00	ND280S	432820	24073
90.00	120.00	ND280M	501680	27903
110.00	150.00	ND315S	633700	35246
125.00	170.00	ND315M	743680	41363
132.00	180.00	ND315M	778810	43317
160.00	215.00	ND315L	852830	47434
180.00	240.00	ND315L	897840	49938
200.00	270.00	ND315LX	995870	55390
225.00	300.00	ND355LX	1063640	59160
250.00	335.00	ND355LX	1110070	61742

OUTPUT		4 POLE : 1500 RPM		
KW	HP	FRAME	PRICE	EX.DUTY
0.37	0.50	GD71	10419	580
0.55	0.75	GD/NG80	11600	645
0.75	1.00	GD/NG80	11720	652
1.10	1.50	GD/NG90S	13310	740
1.50	2.00	GD/NG90L	14500	806
2.20	3.00	GD/NG100L	19240	1070
3.00	4.00	GD/NG100L	20332	1131
3.70	5.00	GD/NG112M	24670	1372
5.50	7.50	GD/NG132S	33990	1891
7.50	10.00	GD/NG132M	39610	2203
11.00	15.00	ND160M	65390	3637
15.00	20.00	ND160L	81270	4520
18.50	25.00	ND180M	105010	5841
22.00	30.00	ND180L	117040	6510
30.00	40.00	ND200L	158020	8789
37.00	50.00	ND225S	194070	10794
45.00	60.00	ND225M	235240	13084
55.00	75.00	ND250M	323300	17982
75.00	100.00	ND280S	395350	21989
90.00	120.00	ND280M	458340	25493
110.00	150.00	ND315S	555260	30884
125.00	170.00	ND315M	635560	35350
132.00	180.00	ND315M	653740	36361
160.00	215.00	ND315L	763680	42476
180.00	240.00	ND315L	815820	45376
200.00	270.00	ND315LX	931170	51792
225.00	300.00	ND355LX	952820	52996
225.00	335.00	ND355LX	1026320	57084

AC MOTORS

IE2 MOTORS - FOOT MOUNTED



(Price List No LTM/006 Rev 1 Dated 17.03.12)

IE2

TOTALLY ENCLOSED FAN COOLED SQUIRREL CAGE 3 PH INDUCTION MOTORS-FOOT MOUNTED

Enclosure conforming to protection IP 55 Horizontal Foot Mounted (B3), continuously rated (S1) suitable for operation on 415+/- 10% V, 3 Phase 50Hz+/- 5% AC supply with ambient 50 C, Class "F" insulation with temperature rise limited to Class "B" and altitude less than 1000 m above m.s.l. Efficiency values are conforming to IS 12615:2011 IEC 60034-30-2008

OUTPUT		6 POLE : 1000 RPM		
KW	HP	FRAME	PRICE	EX.DUTY
0.37	0.50	GD/ND80	12320	685
0.55	0.75	GD/ND80	12640	703
0.75	1.00	GD/NG90S	14170	788
1.10	1.50	GD/NG90L	15540	864
1.50	2.00	GD/NG100L	19850	1104
2.20	3.00	GD/NG112M	23730	1320
3.00	4.00	GD/NG132S	34672	1928
3.70	5.00	GD/NG132S	36280	2018
5.50	7.50	ND132M	40460	2250
7.50	10.00	ND160M	67400	3749
11.00	15.00	ND160L	83960	4670
15.00	20.00	ND180L	109680	6100
18.50	25.00	ND200L	142650	7934
22.00	30.00	ND200L	154820	8611
30.00	40.00	ND225M	242190	13471
37.00	50.00	ND250M	325720	18117
45.00	60.00	ND280S	390150	21700
55.00	75.00	ND280M	442120	24591
75.00	100.00	ND315S	532330	29608
90.00	120.00	ND315M	669330	37228
110.00	150.00	ND315M	746340	41511
125.00	170.00	ND315L	813500	45247
132.00	180.00	ND315LX	879730	48931
160.00	215.00	ND315LX	902880	50218
180.00	240.00	ND355L	995800	55386
200.00	270.00	ND355LX	1034100	57517
225.00	300.00	ND355LX	1074310	59753
250.00	370.00	ND355LX	1114530	61990

AC MOTORS

IE2 MOTORS - FLANGE MOUNTED



(Price List No LTM/006 Rev 1 Dated 17.03.12)

IE2

TOTALLY ENCLOSED FAN COOLED SQUIRREL CAGE 3 PH INDUCTION MOTORS-FLANGE MOUNTED (Any other mounting than B3)
 Enclosure conforming to protection IP 55 Flange Mounted (Any other mounting than B3), continuously rated (S1) suitable for operation on 415+/- 10% V, 3 Phase 50Hz+/- 5% AC supply with ambient 50 C, Class "F" insulation with temperature rise limited to Class "B" and altitude less than 1000 m above m.s.l. Efficiency values are conforming to IS 12615:2011 IEC 60034-30-2008

OUTPUT		2 POLE : 3000 RPM		
KW	HP	FRAME	PRICE	EX.DUTY
0.37	0.50	GD71	10163	565
0.55	0.75	GD/NG80	11258	626
0.75	1.00	GD/NG80	11639	647
1.10	1.50	GD/NG80	12700	706
1.50	2.00	GD/NG90S	14554	809
2.20	3.00	GD/NG90L	18705	1040
3.00	4.00	GD/NG100L	21972	1222
3.70	5.00	GD/NG100L	23010	1280
5.50	7.50	GD/NG132S	37750	2100
7.50	10.00	GD/NG132S	39068	2173
11.00	15.00	ND160M	70280	3909
15.00	20.00	ND160M	82390	4583
18.50	25.00	ND160L	106960	5949
22.00	30.00	ND180M	116290	6468
30.00	40.00	ND200L	172980	9621
37.00	50.00	ND200L	211020	11737
45.00	60.00	ND225M	271590	15106
55.00	75.00	ND250M	365640	20337
75.00	100.00	ND280S	454470	25278
90.00	120.00	ND280M	526770	29299
110.00	150.00	ND315S	665390	37009
125.00	170.00	ND315M	780870	43432
132.00	180.00	ND315M	817760	45484
160.00	215.00	ND315L	895480	49807
180.00	240.00	ND315L	942740	52435
200.00	270.00	ND315LX	1045670	58160
225.00	300.00	ND355LX	1116830	62118
250.00	335.00	ND355LX	1165580	64830

OUTPUT		4 POLE : 1500 RPM		
KW	HP	FRAME	PRICE	EX.DUTY
0.37	0.50	GD71	10732	597
0.55	0.75	GD/NG80	11948	665
0.75	1.00	GD/NG80	12072	671
1.10	1.50	GD/NG90S	13709	763
1.50	2.00	GD/NG90L	14935	831
2.20	3.00	GD/NG100L	19817	1102
3.00	4.00	GD/NG100L	20942	1165
3.70	5.00	GD/NG112M	25410	1413
5.50	7.50	GD/NG132S	35010	1947
7.50	10.00	GD/NG132M	40798	2269
11.00	15.00	ND160M	67360	3747
15.00	20.00	ND160L	83710	4656
18.50	25.00	ND180M	110270	6133
22.00	30.00	ND180L	122900	6836
30.00	40.00	ND200L	165930	9229
37.00	50.00	ND225S	203780	11334
45.00	60.00	ND225M	247010	13739
55.00	75.00	ND250M	339470	18881
75.00	100.00	ND280S	415120	23089
90.00	120.00	ND280M	481260	26768
110.00	150.00	ND315S	583030	32428
125.00	170.00	ND315M	667340	37117
132.00	180.00	ND315M	686430	38179
160.00	215.00	ND315L	801870	44600
180.00	240.00	ND315L	856620	47645
200.00	270.00	ND315LX	977730	54381
225.00	300.00	ND355LX	1000470	55646
250.00	335.00	ND355LX	1077640	59938

AC MOTORS

IE2 MOTORS - FLANGE MOUNTED



(Price List No LTM/006 Rev 1 Dated 17.03.12)

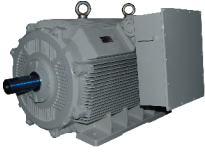
IE2

TOTALLY ENCLOSED FAN COOLED SQUIRREL CAGE 3 PH INDUCTION MOTORS-FLANGE MOUNTED (Any other mounting than B3)
 Enclosure conforming to protection IP 55 Flange Mounted (Any other mounting than B3), continuously rated (S1) suitable for operation on 415+/- 10%
 V, 3 Phase 50Hz+/- 5% AC supply with ambient 50 C, Class "F" insulation with temperature rise limited to Class "B" and altitude less than 1000 m
 above m.s.l. Efficiency values are conforming to IS 12615:2011 IEC 60034-30-2008

OUTPUT		6 POLE : 1000 RPM		
KW	HP	FRAME	PRICE	EX.DUTY
0.37	0.50	GD/ND80	12690	706
0.55	0.75	GD/ND80	13019	724
0.75	1.00	GD/NG90S	14595	812
1.10	1.50	GD/NG90L	16006	890
1.50	2.00	GD/NG100L	20446	1137
2.20	3.00	GD/NG112M	24442	1359
3.00	4.00	GD/NG132S	35712	1986
3.70	5.00	GD/NG132S	37368	2078
5.50	7.50	ND132M	41674	2318
7.50	10.00	ND160M	69430	3862
11.00	15.00	ND160L	86480	4810
15.00	20.00	ND180L	115170	6406
18.50	25.00	ND200L	146930	8172
22.00	30.00	ND200L	159470	8870
30.00	40.00	ND225M	249460	13875
37.00	50.00	ND250M	335500	18661
45.00	60.00	ND280S	401860	22351
55.00	75.00	ND280M	455390	25329
75.00	100.00	ND315S	548300	30496
90.00	120.00	ND315M	689410	38345
110.00	150.00	ND315M	768740	42757
125.00	170.00	ND315L	837910	46605
132.00	180.00	ND315LX	906130	50399
160.00	215.00	ND315LX	929970	51725
180.00	240.00	ND355L	1025680	57048
200.00	270.00	ND355LX	1065130	59243
225.00	300.00	ND355LX	1106540	61546
250.00	370.00	ND355LX	1147970	63850

AC MOTORS

EFF. LEVEL 2 FOOT MOUNTED



(Price List No LTM/006 Rev 1 Dated 17.03.12)

EFF 2
IS 12615

TOTALLY ENCLOSED FAN COOLED SQUIRREL CAGE INDUCTION MOTORS-FOOT MOUNTED

Enclosure conforming to protection IP 55 Horizontal Foot Mounted (B3), continuously rated (S1) suitable for operation on 415+/- 10% V,3 Phase 50Hz+/- 5% AC supply with ambient 50°C, Class "F" insulation with temperature rise limited to Class "B" and altitude less than 1000 m Above m.s.l. conforming to IS 325.

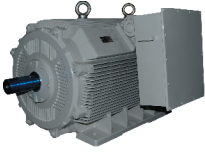
OUTPUT		2POLE : 3000RPM		
KW	HP	FRAME	PRICE	EX.DUTY
0.18	0.25	GD63	7840	436
0.25	0.33	GD63	8070	449
0.37	0.50	GD71	8580	477
0.55	0.75	GD/ND80	9450	526
0.75	1.00	GD/ND80	9820	546
*1.10	1.50	GD/ND80	10700	595
1.50	2.00	GD/ND90S	12290	684
2.20	3.00	GD/ND90L	15800	879
3.00	4.00	GD/ND100L	18550	1032
3.70	5.00	GD/ND100L	19410	1080
*5.50	7.50	ND112M	28430	1581
5.50	7.50	ND/GD132S	31900	1774
7.50	10.00	GD/ND132S	32980	1834
#9.30	12.50	GD/ND132M	51460	2862
9.30	12.5	ND160M	57600	3204
11.00	15.00	ND160M	57650	3206
15.00	20.00	ND160M	67530	3756
18.50	25.00	ND160L	87660	4876
22.00	30.00	ND180M	97750	5437
30.00	40.00	ND200L	145400	8087
37.00	50.00	ND200L	177380	9866
45.00	60.00	ND225M	228280	12697
55.00	75.00	ND250M	307340	17094
60.00	80.00	ND250MX	331920	18461
75.00	100.00	ND280S	400190	22259
90.00	120.00	ND280M	463880	25801
110.00	150.00	ND315S	609240	33886
125.00	170.00	ND315M	714860	39761
132.00	180.00	ND315M	748790	41648
150.00	200.00	ND315L	791910	44046
160.00	215.00	ND315LX	820230	45621
180.00	240.00	ND315L	863500	48028
200.00	270.00	ND315LX	957650	53264
\$225.00	300.00	ND355L	1012610	56321
250.00	335.00	ND355LX	1067560	59378
275.00	370.00	ND355LX	1135610	63163
315.00	425.00	ND355LX	1162920	64682
\$335.00	452.00	ND355LX	1327070	73812
350.00	470.00	ND400LX	1887410	104978
375.00	503.00	ND400LX	2022240	112477
400.00	536.00	ND400LX	2124030	118139
425.00	570.00	ND400LX	2292330	127499

OUTPUT		4POLE : 1500RPM		
KW	HP	FRAME	PRICE	EX.DUTY
0.18	0.25	GD63	8600	478
0.25	0.33	GD71	8760	487
0.37	0.50	GD71	9060	504
0.55	0.75	GD/ND80	10090	561
0.75	1.00	GD/ND80	10170	566
1.10	1.50	GD/ND90S	11580	644
1.50	2.00	GD/ND90L	12610	701
2.20	3.00	GD/ND100L	16730	931
3.00	4.00	GD/ND100L	17680	983
3.70	5.00	GD/ND112M	21450	1193
5.50	7.50	GD/ND132S	29560	1644
7.50	10.00	GD/ND132M	34440	1916
*9.30	12.50	ND132M	47610	2648
9.30	12.50	ND160M	54830	3050
11.00	15.00	ND160M	55200	3070
#15.00	20.00	ND160L	68610	3816
18.50	25.00	ND180M	92690	5155
22.00	30.00	ND180L	103300	5746
30.00	40.00	ND200L	139460	7757
37.00	50.00	ND225S	171290	9527
45.00	60.00	ND225M	207620	11548
55.00	75.00	ND250M	285350	15871
60.00	80.00	ND250MX	308170	17140
75.00	100.00	ND280S	365550	20332
90.00	120.00	ND280M	423490	23555
110.00	150.00	ND315S	533740	29687
125.00	170.00	ND315M	610930	33980
132.00	180.00	ND315M	628410	34952
160.00	215.00	ND315LX	733780	40813
180.00	240.00	ND315L	784200	43617
200.00	270.00	ND315LX	895030	49782
\$225.00	300.00	ND355L	915900	50942
250.00	300.00	ND355LX	986590	54874
260.00	350.00	ND355LX	986590	54874
275.00	370.00	ND355LX	998900	55559
315.00	425.00	ND355LX	1129280	62811
335.00	452.00	ND355LX	1221860	67960
350.00	470.00	ND355LX	1455810	80972
360.00	485.00	ND355LX	1556950	86598
#375.00	503.00	ND355LX	1779110	98954
375.00	503.00	ND400LX	1880650	104602
400.00	536.00	ND400LX	2005850	111565
425.00	570.00	ND400LX	2131870	118575
450.00	603.00	ND400LX	2370120	131826
460.00	620.00	ND400LX	2536010	141053
470.00	630.00	ND400LX	2662820	148106

Note : * This rating is suitable for class F temp rise only
 All GD frames are with Terminal Box on Top
 # This rating is suitable for 45°C Amb. / 75 °C Temp. rise
 \$ This rating is suitable for 40°C Amb. / 80 °C Temp. Rise

AC MOTORS

EFF. LEVEL 2 FOOT MOUNTED



(Price List No LTM/006 Rev 1 Dated 17.03.12)

EFF 2
IS 12615

TOTALLY ENCLOSED FAN COOLED SQUIREL CAGE INDUCTION MOTORS-FOOT MOUNTED

Enclosure conforming to protection IP 55 Horizontal Foot Mounted (B3), continuously rated (S1) suitable for operation on 415+/- 10% V,3 Phase 50Hz+/- 5% AC supply with ambient 50°C, Class "F" insulation with temperature rise limited to Class "B" and altitude less than 1000 m Above m.s.l. conforming to IS 325.

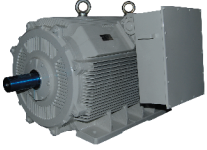
OUTPUT		6POLE :1000RPM		
KW	HP	FRAME	PRICE	EX.DUTY
0.37	0.50	GD/ND80	10710	596
0.55	0.75	GD/ND80	10950	609
0.75	1.00	GD/ND90S	12320	685
1.10	1.50	GD/ND90L	13510	751
1.50	2.00	GD/ND100L	17260	960
2.20	3.00	GD/ND112M	20640	1148
3.00	4.00	GD/ND132S	30150	1677
3.70	5.00	GD/ND132S	31550	1755
5.50	7.50	GD/ND132M	35180	1957
7.50	10.00	ND160M	56900	3165
9.30	12.50	ND160L	67310	3744
11.00	15.00	ND160L	70860	3941
15.00	20.00	ND180L	96800	5384
18.50	25.00	ND200L	125900	7003
22.00	30.00	ND200L	136650	7600
30.00	40.00	ND225M	213750	11889
37.00	50.00	ND250M	287490	15990
45.00	60.00	ND280S	366930	20409
55.00	75.00	ND280M	416300	23155
75.00	100.00	ND315S	511710	28461
90.00	120.00	ND315M	643380	35785
110.00	150.00	ND315M	717430	39903
125.00	170.00	ND315L	781980	43494
132.00	180.00	ND315L	837510	46582
150.00	200.00	ND315LX	860910	47884
160.00	215.00	ND315LX	867900	48273
180.00	240.00	ND355L	957210	53240
200.00	270.00	ND355LX	994040	55289
225.00	300.00	ND355LX	1032690	57438
250.00	335.00	ND355LX	1071350	59588
275.00	370.00	ND355LX	1234180	68645
#315.00	415.00	ND355LX	1705600	94865
315.00	415.00	ND400LX	1978600	110050
325.00	435.00	ND400LX	2032710	113059
415.00	560.00	ND400LX	2285060	127095
#430.00	575.00	ND400LX	2285060	127095

OUTPUT		8POLE : 750RPM		
KW	HP	FRAME	PRICE	EX.DUTY
0.37	0.50	GD/ND90S	11840	659
0.55	0.75	GD/ND90L	12970	721
0.75	1.00	GD/ND100L	15950	887
1.10	1.50	GD/ND100L	19440	1081
1.50	2.00	GD/ND112M	22520	1253
2.20	3.00	GD/ND132S	29840	1660
3.00	4.00	GD/ND132M	46750	2600
3.70	5.00	GD/ND132M	46750	2600
5.50	7.50	ND160M	56930	3166
7.50	10.00	ND160L	72220	4017
9.30	12.50	ND180M	93920	5224
11.00	15.00	ND180L	99040	5509
15.00	20.00	ND200L	139480	7758
18.50	25.00	ND225S	180710	10051
22.00	30.00	ND225M	218280	12141
30.00	40.00	ND250M	293350	16316
37.00	50.00	ND280S	374910	20852
45.00	60.00	ND280M	435270	24210
55.00	75.00	ND315S	524930	29197
75.00	100.00	ND315M	654920	36427
90.00	120.00	ND315L	738950	41100
110.00	150.00	ND315LX	782270	43510
125.00	170.00	ND315LX	863580	48032
132.00	180.00	ND315LX	910690	50653
150.00	200.00	ND355L	956150	53181
160.00	215.00	ND355LX	1053030	58570
180.00	240.00	ND355LX	1075270	59807
200.00	270.00	ND355LX	1151920	64070
#225.00	300.00	ND355LX	1644470	91465
250.00	335.00	ND400LX	2534710	140981
275.00	370.00	ND400LX	2788180	155079
#315.00	425.00	ND400LX	3099890	172416

Note : * This rating is suitable for class F temp rise only
All GD frames are with Terminal Box on Top
This rating is suitable for 45°C Amb. / 75 °C Temp. Rise

AC MOTORS

EFF. LEVEL 2 FLANGE MOUNTED



(Price List No LTM/006 Rev 1 Dated 17.03.12)

EFF 2
IS 12615

TOTALLY ENCLOSED FAN COOLED SQUIRREL CAGE INDUCTION MOTORS-FLANGE (Any other than B3 Mounting)
Enclosure conforming to protection IP 55, Flange Mounting (Any other mounting than B3), continuously rated (S1) suitable for operation on 415+/- 10% V, 3 Phase 50Hz+/- 5% AC supply with ambient 50°C, Class "F" insulation with temperature rise limited to Class "B" and altitude less than 1000 m above m.s.l. conforming to IS 325.

OUTPUT		2POLE :3000RPM		
KW	HP	FRAME	PRICE	EX.DUTY
0.18	0.25	GD63	8080	449
0.25	0.33	GD63	8310	462
0.37	0.50	GD71	8830	491
0.55	0.75	GD/ND80	9730	541
0.75	1.00	GD/ND80	10110	562
*1.10	1.50	GD/ND80	11030	613
1.50	2.00	GD/ND90S	12670	705
2.20	3.00	GD/ND90L	16270	905
3.00	4.00	GD/ND100L	20010	1113
3.70	5.00	GD/ND100L	20010	1113
*5.50	7.50	ND112M	29270	1628
5.50	7.50	GD/ND132S	32860	1828
7.50	10.00	GD/ND132S	33980	1890
#9.30	12.50	GD/ND132M	53010	2948
9.30	12.5	ND160M	59350	3301
11.00	15.00	ND160M	59380	3303
15.00	20.00	ND160M	69580	3870
18.50	25.00	ND160L	90290	5022
22.00	30.00	ND180M	102630	5708
30.00	40.00	ND200L	152660	8491
37.00	50.00	ND200L	186260	10360
45.00	60.00	ND225M	239680	13331
55.00	75.00	ND250M	322690	17948
60.00	80.00	ND250MX	348530	19385
75.00	100.00	ND280S	420210	23372
90.00	120.00	ND280M	487070	27091
110.00	150.00	ND315S	639710	35581
125.00	170.00	ND315M	750620	41749
132.00	180.00	ND315M	786240	43731
150.00	200.00	ND315L	831510	46249
160.00	215.00	ND315LX	861220	47901
180.00	240.00	ND315L	906670	50429
200.00	270.00	ND315LX	1005530	55928
225.00	300.00	ND355L	1063240	59137
250.00	335.00	ND355LX	1120940	62347
275.00	370.00	ND355LX	1192400	66321
315.00	425.00	ND355LX	1221070	67916
335.00	452.00	ND355LX	1393420	77502
350.00	470.00	ND400LX	1981790	110227
375.00	503.00	ND400LX	2123330	118100
400.00	536.00	ND400LX	2230220	124045
425.00	570.00	ND400LX	2406930	133873

OUTPUT		4POLE:1500RPM		
KW	HP	FRAME	PRICE	EX.DUTY
0.18	0.25	GD63	8850	492
0.25	0.33	GD71	9030	502
0.37	0.50	GD71	9330	519
0.55	0.75	GD/ND80	10390	578
0.75	1.00	GD/ND80	10480	583
1.10	1.50	GD/ND90S	11920	663
1.50	2.00	GD/ND90L	13000	723
2.20	3.00	GD/ND100L	17230	958
3.00	4.00	GD/ND100L	19060	1060
3.70	5.00	GD/ND112M	22090	1229
5.50	7.50	GD/ND132S	30440	1693
7.50	10.00	GD/ND132M	35490	1974
*9.30	12.50	ND132M	49030	2727
9.30	12.50	ND160M	56470	3141
11.00	15.00	ND160M	56850	3162
#15.00	20.00	ND160L	70680	3931
18.50	25.00	ND180M	97320	5413
22.00	30.00	ND180L	108460	6033
30.00	40.00	ND200L	146450	8146
37.00	50.00	ND225S	179840	10003
45.00	60.00	ND225M	218000	12125
55.00	75.00	ND250M	299610	16664
60.00	80.00	ND250MX	323590	17998
75.00	100.00	ND280S	383820	21348
90.00	120.00	ND280M	444660	24732
110.00	150.00	ND315S	560440	31172
125.00	170.00	ND315M	641490	35680
132.00	180.00	ND315M	659820	36699
160.00	215.00	ND315LX	770460	42853
180.00	240.00	ND315L	823410	45798
200.00	270.00	ND315LX	939790	52271
\$225.00	300.00	ND355L	961690	53489
250.00	300.00	ND355LX	1035920	57618
260.00	350.00	ND355LX	1035920	57618
275.00	370.00	ND355LX	1048860	58338
315.00	425.00	ND355LX	1185740	65951
335.00	452.00	ND355LX	1282950	71358
350.00	470.00	ND355LX	1528600	85021
360.00	485.00	ND355LX	1634800	90928
#375.00	503.00	ND355LX	1868050	103901
375.00	503.00	ND400LX	1974680	109832
400.00	536.00	ND400LX	2106160	117145
425.00	570.00	ND400LX	2238440	124502
450.00	603.00	ND400LX	2488620	138417
460.00	620.00	ND400LX	2662820	148106
470.00	630.00	ND400LX	2795950	155511

Note : * This rating is suitable for class F temp rise only

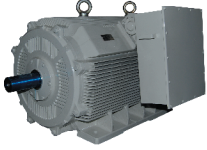
This rating is suitable for 45°C Amb. / 75 °C Temp. rise

GD frame motors, Terminal box will be on top for B35 Motors

\$ Suitable for 40°C Amb. / 80 °C Temp. rise

AC MOTORS

EFF. LEVEL 2 FLANGE MOUNTED



(Price List No LTM/006 Rev 1 Dated 17.03.12)

EFF 2
IS 12615

TOTALLY ENCLOSED FAN COOLED SQUIRREL CAGE INDUCTION MOTORS-FLANGE (Any other than B3 Mounting)
Enclosure conforming to protection IP 55, Flange Mounting (Any other mounting than B3), continuously rated (S1) suitable for operation on 415+/- 10% V, 3 Phase 50Hz+/- 5% AC supply with ambient 50°C, Class "F" insulation with temperature rise limited to Class "B" and altitude less than 1000 m above m.s.l. conforming to IS 325.

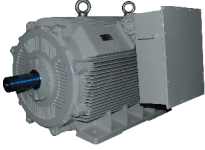
OUTPUT		6POLE:1000RPM		
KW	HP	FRAME	PRICE	EX.DUTY
0.37	0.50	GD/ND80	11040	614
0.55	0.75	GD/ND80	11290	628
0.75	1.00	GD/ND90S	12690	706
1.10	1.50	GD/ND90L	13920	774
1.50	2.00	GD/ND100L	17790	989
2.20	3.00	GD/ND112M	21250	1182
3.00	4.00	GD/ND132S	31050	1727
3.70	5.00	GD/ND132S	32490	1807
5.50	7.50	GD/ND132M	36240	2016
7.50	10.00	ND160M	58610	3260
9.30	12.50	ND160L	69330	3856
11.00	15.00	ND160L	72990	4060
15.00	20.00	ND180L	101650	5654
18.50	25.00	ND200L	132200	7353
22.00	30.00	ND200L	143480	7980
30.00	40.00	ND225M	224450	12484
37.00	50.00	ND250M	301860	16789
45.00	60.00	ND280S	385260	21428
55.00	75.00	ND280M	437110	24312
75.00	100.00	ND315S	537310	29885
90.00	120.00	ND315M	675560	37575
110.00	150.00	ND315M	753290	41898
125.00	170.00	ND315L	821090	45669
132.00	180.00	ND315L	879380	48911
150.00	200.00	ND315LX	903960	50278
160.00	215.00	ND315LX	911300	50687
180.00	240.00	ND355L	1005080	55903
200.00	270.00	ND355LX	1043760	58054
225.00	300.00	ND355LX	1084320	60310
250.00	335.00	ND355LX	1124930	62569
275.00	370.00	ND355LX	1295890	72077
#315.00	415.00	ND355LX	1790890	99609
315.00	415.00	ND400LX	2077540	115553
325.00	435.00	ND400LX	2134350	118713
415.00	560.00	ND400LX	2399310	133450
#430.00	575.00	ND400LX	2399310	133450

OUTPUT		8POLE:750RPM		
KW	HP	FRAME	PRICE	EX.DUTY
0.37	0.50	GD/ND90S	12190	678
0.55	0.75	GD/ND90L	13360	743
0.75	1.00	GD/ND100L	16430	914
1.10	1.50	GD/ND100L	20020	1114
1.50	2.00	GD/ND112M	23180	1289
2.20	3.00	GD/ND132S	30740	1710
3.00	4.00	GD/ND132M	48160	2679
3.70	5.00	GD/ND132M	48160	2679
5.50	7.50	ND160M	58650	3262
7.50	10.00	ND160L	73990	4115
9.30	12.50	ND180M	98610	5485
11.00	15.00	ND180L	103970	5783
15.00	20.00	ND200L	146470	8147
18.50	25.00	ND225S	189750	10554
22.00	30.00	ND225M	229190	12748
30.00	40.00	ND250M	308020	17132
37.00	50.00	ND280S	393660	21895
45.00	60.00	ND280M	457020	25419
55.00	75.00	ND315S	551180	30657
75.00	100.00	ND315M	687660	38248
90.00	120.00	ND315L	775880	43154
110.00	150.00	ND315LX	821370	45685
125.00	170.00	ND315LX	906770	50435
132.00	180.00	ND315LX	956220	53185
150.00	200.00	ND355L	1003960	55840
160.00	215.00	ND355LX	1105680	61498
180.00	240.00	ND355LX	1129040	62797
#225.00	300.00	ND355LX	1726700	96039
250.00	335.00	ND400LX	2661450	148030
275.00	370.00	ND400LX	2927590	162833
#315.00	425.00	ND400LX	3254880	181036

Note : * This rating is suitable for class F temp rise only
This rating is suitable for 45°C Amb. / 75 °C Temp. Rise
GD frame motors, Terminal box will be on top for B35 Motors

AC MOTORS

EFF. LEVEL 1 FOOT MOUNTED



(Price List No LTM/006 Rev 1 Dated 17.03.12)

EFF 1
IS 12615

TOTALLY ENCLOSED FAN COOLED SQUIREL CAGE INDUCTION MOTORS-FOOT MOUNTED

Enclosure conforming to protection IP 55 Horizontal Foot Mounted (B3), continuously rated (S1) suitable for operation on 415+/- 10% V, 3 Phase 50Hz+/- 5% AC supply with ambient 50°C, Class "F" insulation with temperature rise limited to Class "B" and altitude less than 1000 m Above m.s.l. conforming to IS 325.

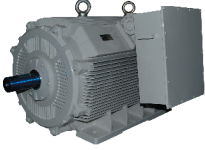
OUTPUT		2POLE :3000RPM		
KW	HP	FRAME	PRICE	EX.DUTY
0.55	0.75	NG80	10930	608
0.75	1.00	NG80	11300	629
1.10	1.50	NG80	12330	686
1.50	2.00	NG90S	14130	786
2.20	3.00	NG90L	18160	1010
3.70	5.00	NG100L	22340	1243
5.50	7.50	NG132S	36650	2038
7.50	10.00	NG132S	37930	2110
9.30	12.50	ND160M	64980	3614
11.00	15.00	ND160M	66300	3688
15.00	20.00	ND160M	77660	4319
18.50	25.00	ND160L	100810	5607
22.00	30.00	ND180M	107520	5980
30.00	40.00	ND200L	159940	8896
37.00	50.00	ND200L	195110	10852
45.00	60.00	ND225M	251110	13967
55.00	75.00	ND250MX	338070	18803
75.00	100.00	ND280S	420210	23372
90.00	120.00	ND280M	487060	27090
110.00	150.00	ND315S	615240	34220
125.00	170.00	ND315M	722020	40159
132.00	180.00	ND315M	756120	42055
160.00	215.00	ND315LX	827990	46053
180.00	240.00	ND315LX	871680	48483
200.00	270.00	ND315LX	966860	53777
225.00	300.00	ND355L	1022730	56884
250.00	335.00	ND355LX	1077730	59943
275.00	370.00	ND355LX	1146970	63794
315.00	425.00	ND355LX	1174550	65328
335.00	452.00	ND355LX	1340330	74549

OUTPUT		4POLE:1500RPM		
KW	HP	FRAME	PRICE	EX.DUTY
0.55	0.75	NG80	11600	645
0.75	1.00	NG80	11720	652
1.10	1.50	NG90S	13310	740
1.50	2.00	NG90L	14500	806
2.20	3.00	NG100L	19240	1070
3.70	5.00	NG112M	24670	1372
5.50	7.50	NG132S	33990	1891
7.50	10.00	NG132M	39610	2203
9.30	12.50	ND160M	62120	3455
11.00	15.00	ND160M	63480	3531
15.00	20.00	ND160L	78900	4388
18.50	25.00	ND180M	101950	5670
22.00	30.00	ND180L	113630	6320
30.00	40.00	ND200L	153410	8533
37.00	50.00	ND225S	188410	10479
45.00	60.00	ND225M	228380	12702
55.00	75.00	ND250MX	313880	17458
75.00	100.00	ND280S	383830	21349
90.00	120.00	ND280M	444990	24750
110.00	150.00	ND315S	539080	29984
125.00	170.00	ND315M	617050	34320
132.00	180.00	ND315M	634690	35301
160.00	215.00	ND315LX	741430	41238
180.00	240.00	ND315LX	792050	44054
200.00	270.00	ND315LX	904040	50283
225.00	300.00	ND355L	925060	51452
250.00	335.00	ND355LX	996420	55421
260.00	350.00	ND355LX	996420	55421
275.00	370.00	ND355LX	1008890	56114
315.00	425.00	ND355LX	1140580	63439
335.00	452.00	ND355LX	1233360	68599
350.00	470.00	ND355LX	1470370	81782

Note : * All GD frames are with Terminal Box on Top
Eff1 will be punched on the motor nameplates upto 160Kw

AC MOTORS

EFF. LEVEL 1 FOOT MOUNTED



(Price List No LTM/006 Rev 1 Dated 17.03.12)

EFF 1
IS 12615

TOTALLY ENCLOSED FAN COOLED SQUIRREL CAGE INDUCTION MOTORS-FOOT MOUNTED

Enclosure conforming to protection IP 55 Horizontal Foot Mounted (B3), continuously rated (S1) suitable for operation on 415+/- 10% V, 3 Phase 50Hz+/- 5% AC supply with ambient 50°C, Class "F" insulation with temperature rise limited to Class "B" and altitude less than 1000 m Above m.s.l. conforming to IS 325.

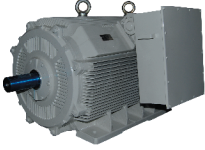
OUTPUT		6POLE :1000RPM		
KW	HP	FRAME	PRICE	EX.DUTY
0.37	0.50	NG80	12320	685
0.55	0.75	NG80	12640	703
0.75	1.00	NG90S	14170	788
1.10	1.50	NG90L	15540	864
1.50	2.00	NG100L	19850	1104
2.20	3.00	NG112M	23730	1320
3.70	5.00	NG132S	36280	2018
5.50	7.50	NG132M	40460	2250
7.50	10.00	ND160M	65430	3639
9.30	12.50	ND160L	77400	4305
11.00	15.00	ND160L	81510	4534
15.00	20.00	ND180L	106480	5922
18.50	25.00	ND200L	138490	7703
22.00	30.00	ND200L	150310	8360
30.00	40.00	ND225M	235130	13078
37.00	50.00	ND250M	316230	17589
45.00	60.00	ND280S	378780	21068
55.00	75.00	ND280M	429240	23874
75.00	100.00	ND315S	516820	28746
90.00	120.00	ND315M	649830	36144
110.00	150.00	ND315M	724600	40302
125.00	170.00	ND315L	789800	43929
132.00	180.00	ND315L	845890	47048
160.00	215.00	ND315LX	876580	48755
170.00	230.00	ND355L	912460	50751
180.00	240.00	ND355L	966790	53773
200.00	270.00	ND355LX	1003980	55841
225.00	300.00	ND355LX	1043010	58012
250.00	370.00	ND355LX	1082060	60184
275.00	370.00	ND355LX	1246530	69332

OUTPUT		8POLE:750RPM		
KW	HP	FRAME	PRICE	EX.DUTY
3.70	5.00	ND160M	62140	3456
5.50	7.50	ND160M	65470	3641
7.50	10.00	ND160L	83050	4619
9.30	12.50	ND180M	103310	5746
11.00	15.00	ND180L	108940	6059
15.00	20.00	ND200L	153440	8534
18.50	25.00	ND225S	198770	11056
22.00	30.00	ND225M	239920	13344
30.00	40.00	ND250MX	322680	17947
37.00	50.00	ND280S	393660	21895
45.00	60.00	ND280M	457020	25419
55.00	75.00	ND315S	530170	29488
75.00	100.00	ND315M	661480	36792
90.00	120.00	ND315L	746320	41510
110.00	150.00	ND315L	790080	43944
125.00	170.00	ND315L	872230	48513
#132.00	180.00	ND315LX	965040	53676
160.00	215.00	ND355LX	1063560	59155
#180.00	240.00	ND355LX	1139500	63379
200.00	270.00	ND355LX	1163450	64711

Note : * All GD frames are with Terminal Box on Top
Eff1 will be punched on the motor nameplates upto 160Kw

AC MOTORS

SLIP RING



(Price List No LTM/006 Rev 1 Dated 17.03.12)

TOTALLY ENCLOSED FAN COOLED SLIPRING INDUCTION MOTORS

Enclosure conforming to protection IP 55 Horizontal Foot Mounted (B3), continuously rated (S1) suitable for operation on 415+/- 10% V, 3 Phase 50Hz+/- 5% AC supply with ambient 45°C, Class "F" insulation with temperature rise limited to Class "B" and altitude less than 1000 m Above m.s.l. conforming to IS 325

OUTPUT		4 POLE : 1500 RPM		
KW	HP	FRAME	PRICE	EX.DUTY
3.00	4.00	DW132S	78490	4366
3.70	5.00	DW132S	80290	4466
5.50	7.50	DW132S	81960	4559
5.50	7.50	DW132M	99590	5539
7.50	10.00	NDW160M	108540	6037
11.00	15.00	NDW160L	135820	7554
15.00	20.00	NDW180L	179810	10001
18.50	25.00	NDW200L	206860	11506
22.00	30.00	NDW200L	229830	12783
30.00	40.00	NDW225M	283910	15791
37.00	50.00	NDW250M	389320	21654
45.00	60.00	NDW250M	465360	25883
55.00	75.00	NDW280S	512870	28526
75.00	100.00	NDW280M	569480	31674
90.00	120.00	NDW315S	709950	39487
110.00	150.00	NDW315M	820360	45628
125.00	170.00	NDW315LX	902360	50189
132.00	180.00	NDW315LX	951160	52904
150.00	200.00	NDW315LX	1079190	60025
160.00	215.00	NDW315LX	1102430	61317
180.00	240.00	NDW355L	1166350	64872
200.00	270.00	NDW355L	1295950	72081
225.00	300.00	NDW355LX	1365610	75955
250.00	335.00	NDW355LX	1382570	76899
275.00	370.00	NDW355LX	1466230	81552
300.00	402.00	NDW400LX	2089840	116237
315.00	436.00	NDW400LX	2194340	122049
350.00	470.00	NDW400LX	2438160	135610

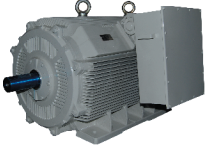
OUTPUT		6 POLE : 1000 RPM		
KW	HP	FRAME	PRICE	EX.DUTY
2.20	3.00	DW132S	81060	4509
3.00	4.00	DW132S	85280	4743
3.70	5.00	DW132M	89600	4984
5.50	7.50	NDW160M	109270	6078
7.50	10.00	NDW160L	136350	7584
11.00	15.00	NDW180L	177030	9846
15.00	20.00	NDW200L	231130	12855
18.50	25.00	NDW225M	298030	16576
22.00	30.00	NDW225M	356140	19809
30.00	40.00	NDW250M	471020	26198
37.00	50.00	NDW280S	533290	29662
45.00	60.00	NDW280M	579450	32229
55.00	75.00	NDW315S	646190	35941
75.00	100.00	NDW315M	816200	45397
90.00	120.00	NDW315LX	905030	50338
110.00	150.00	NDW315LX	1074200	59747
125.00	170.00	NDW315LX	1166490	64880
132.00	180.00	NDW315LX	1231800	68513
150.00	200.00	NDW355LX	1250560	69556
160.00	215.00	NDW355LX	1333920	74193
180.00	240.00	NDW355LX	1417260	78828
*200.00	270.00	NDW355LX	1535370	85397
225.00	300.00	NDW400LX	1652030	91886
250.00	335.00	NDW400LX	1835600	102096
275.00	370.00	NDW400LX	2019150	112305
300.00	402.00	NDW400LX	2202680	122513
*315.00	436.00	NDW400LX	2386240	132723

Note : Position of Terminal Box on Top

* Rotor with class F temperature rise

AC MOTORS

SLIP RING



(Price List No LTM/006 Rev 1 Dated 17.03.12)

TOTALLY ENCLOSED FAN COOLED SLIP RING INDUCTION MOTORS

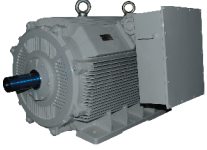
Enclosure conforming to protection IP 55 Horizontal Foot Mounted (B3), continuously rated (S1) suitable for operation on 415+/- 10% V, 3 Phase 50Hz+/- 5% AC supply with ambient 45°C, Class "F" insulation with temperature rise limited to Class "B" and altitude less than 1000 m Above m.s.l. conforming to IS 325

OUTPUT		8 POLE : 750 RPM		
KW	HP	FRAME	PRICE	EX.DUTY
3.00	4.00	NDW160M	116870	6500
3.70	5.00	NDW160M	121040	6732
5.50	7.50	NDW160L	135670	7546
7.50	10.00	NDW180L	184520	10263
11.00	15.00	NDW200L	241740	13446
15.00	20.00	NDW225M	310850	17289
18.50	25.00	NDW225M	359500	19995
22.00	30.00	NDW250M	469230	26099
30.00	40.00	NDW280S	541370	30111
37.00	50.00	NDW280M	620950	34537
45.00	60.00	NDW315S	763260	42453
55.00	75.00	NDW315M	883380	49134
75.00	100.00	NDW315LX	972480	54089
90.00	120.00	NDW315LX	1150240	63976
110.00	150.00	NDW355LX	1225070	68138
125.00	170.00	NDW355LX	1362730	75795
132.00	180.00	NDW355LX	1400100	77874
150.00	200.00	NDW355LX	1499860	83422
160.00	215.00	NDW355LX	1519700	84526
180.00	240.00	NDW400LX	1804650	100375
200.00	270.00	NDW400LX	2005010	111519
225.00	300.00	NDW400LX	2255640	125459

Note : Position of Terminal Box on Top

AC MOTORS

BRAKE MOTORS - S1 DUT



(Price List No LTM/006 Rev 1 Dated 17.03.12)

EFF 2
IS 12615

TOTALLY ENCLOSED FAN COOLED SQUIRREL CAGE INDUCTION MOTORS WITH EXTERNAL BRAKE

Enclosure conforming to protection IP 55 Horizontal Foot Mounted (B3), continuously rated (S1) suitable for operation on 415+/- 10% V, 3 Phase 50Hz+/- 5% AC supply with ambient 45°C, Class "F" insulation with temperature rise limited to Class "B" and altitude less than 1000 m Above m.s.l. conforming to IS 325

OUTPUT		2POLE :3000RPM		
KW	HP	FRAME	PRICE	EX.DUTY
0.18	0.25	GD63	15880	883
0.25	0.33	GD63	16080	894
0.37	0.50	GD71	17880	994
0.55	0.75	GD71	19440	1081
0.75	1.00	GD80	19830	1103
1.10	1.50	GD80	21000	1168
1.50	2.00	GD90S	26850	1493
2.20	3.00	GD90L	31370	1745
3.00	4.00	GD100L	38510	2142
3.70	5.00	GD100L	38510	2142
5.50	7.50	GD112M	54770	3046
5.50	7.50	GD132M	63390	3526
7.50	10.00	GD132S	64770	3603
9.30	12.50	GD132M	91720	5101

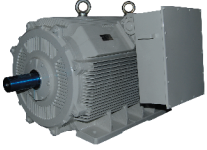
OUTPUT		4POLE:1500RPM		
KW	HP	FRAME	PRICE	EX.DUTY
0.18	0.25	GD63	16910	941
0.25	0.33	GD71	18010	1002
0.37	0.50	GD71	18390	1023
0.55	0.75	GD80	20240	1126
0.75	1.00	GD80	20330	1131
1.10	1.50	GD90S	25840	1437
1.50	2.00	GD90L	27170	1511
2.20	3.00	GD100L	34910	1942
3.00	4.00	GD100L	37180	2068
3.70	5.00	GD112M	43870	2440
5.50	7.50	GD132S	60110	3343
7.50	10.00	GD132M	66390	3693
9.30	12.50	GD132M	86110	4789

OUTPUT		6POLE :1000RPM		
KW	HP	FRAME	PRICE	EX.DUTY
0.37	0.50	GD80	20980	1167
0.55	0.75	GD80	21170	1177
0.75	1.00	GD90S	26790	1490
1.10	1.50	GD90L	28310	1575
1.50	2.00	GD100L	36620	2037
2.20	3.00	GD112M	44060	2451
3.00	4.00	GD132S	69830	3884
3.70	5.00	GD132S	69830	3884
5.50	7.50	GD132M	74500	4144

OUTPUT		8POLE:750RPM		
KW	HP	FRAME	PRICE	EX.DUTY
0.37	0.50	GD90S	26060	1449
0.55	0.75	GD90L	27410	1525
0.75	1.00	GD100L	34870	1939
1.10	1.50	GD100L	39540	2199
1.50	2.00	GD112M	46590	2591
2.20	3.00	GD132S	62260	3463
3.00	4.00	GD132M	92110	5123

AC MOTORS

BRAKE MOTORS - S4 DUT



(Price List No LTM/006 Rev 1 Dated 17.03.12)

EFF 2
IS 12615

TOTALLY ENCLOSED FAN COOLED SQUIRREL CAGE INDUCTION MOTORS WITH EXTERNAL BRAKE

Enclosure conforming to protection IP 55 Horizontal Foot Mounted (B3), continuously rated (S4) 40% CDF 150 Starts/hour suitable for operation on 415+/- 10% V, 3 Phase 50Hz+/- 5% AC supply with ambient 45°C, Class "F" insulation with temperature rise limited to Class "B" and altitude less than 1000 m above m.s.l. conforming to IS 325

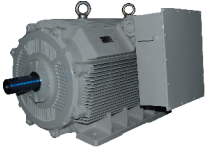
OUTPUT		4POLE :1500RPM		
KW	HP	FRAME	PRICE	EX.DUTY
0.37	0.5	GD71	20230	1125
0.55	0.75	GD71	20500	1140
0.75	1.00	GD80	22280	1239
1.10	1.50	GD80	22870	1272
1.50	2.00	GD90S	28430	1581
2.20	3.00	GD90L	29890	1662
3.75	5.06	GD100L	38390	2135
5.50	7.50	GD112M	48250	2684
7.50	10.00	GD132S	66130	3678
9.30	12.50	GD132M	73030	4062

OUTPUT		6POLE:1000RPM		
KW	HP	FRAME	PRICE	EX.DUTY
0.37	0.5	GD71	22520	1253
0.55	0.75	GD80	23080	1284
0.75	1.00	GD80	23610	1313
1.10	1.50	GD90S	29460	1639
1.50	2.00	GD90L	31140	1732
2.20	3.00	GD100L	40280	2240
3.70	5.00	GD112M	48470	2696
5.50	7.50	GD132S	76820	4273
7.50	10.00	GD132M	81950	4558

OUTPUT		8POLE :750RPM		
KW	HP	FRAME	PRICE	EX.DUTY
0.55	0.75	GD90S	28660	1594
0.75	1.00	GD90L	30150	1677
1.10	1.50	GD100L	38360	2134
1.50	2.00	GD100L	43630	2427
2.20	3.00	GD112M	51250	2851
3.70	5.00	GD132S	68490	3809

AC MOTORS

SPDP SLIP RING



(Price List No LTM/006 Rev 1 Dated 17.03.12)

SCREEN PROTECTED DRIP PROOF SLIPRING INDUCTION MOTORS

Enclosure conforming to protection IP 21/23 Horizontal Foot Mounted (B3), continuously rated (S1) suitable for operation on 415+/- 10% V, 3 Phase 50Hz+/- 5% AC supply with ambient 45°C, Class "F" insulation with temperature rise limited to Class "B" and altitude less than 1000 m Above m.s.l. conforming to IS 325

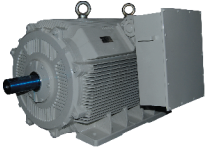
OUTPUT		4 POLE : 1500 RPM		
KW	HP	FRAME	PRICE	EX.DUTY
7.50	10.00	CW160M	94350	5248
11.00	15.00	CW160L	101090	5623
15.00	20.00	CW180M	125600	6986
18.50	25.00	CW180M	148760	8274
22.00	30.00	CW180L	159890	8893
30.00	40.00	CW200M	195750	10888
37.00	50.00	CW200L	205870	11450
45.00	60.00	CW225M	270930	15069
55.00	75.00	CW250S	365250	20315
75.00	100.00	CW250S	383520	21331
90.00	120.00	CW250MX	467550	26005
110.00	150.00	CW280M	522670	29071
125.00	170.00	CW280MX	567820	31582
132.00	180.00	CW280MX	609820	33918
150.00	200.00	CW315S	678870	37759
160.00	215.00	CW315M	705630	39247
180.00	240.00	CW315MX	760110	42277
200.00	270.00	CW315MX	866280	48182
225.00	300.00	CW315MX	980350	54527
250.00	335.00	CW355L	1190520	66217
275.00	369.00	CW355L	1258080	69974
300.00	402.00	CW355L	1311550	72948
325.00	435.00	CW355L	1336580	74341
350.00	470.00	CW355L	1420800	79025

OUTPUT		6 POLE : 1000 RPM		
KW	HP	FRAME	PRICE	EX.DUTY
5.50	7.50	CW160M	97260	5410
7.50	10.00	CW160L	103840	5776
11.00	15.00	CW180M	145810	8110
15.00	20.00	CW180L	160710	8939
18.50	25.00	CW200M	200890	11174
22.00	30.00	CW200L	211690	11774
30.00	40.00	CW225M	282910	15735
37.00	50.00	CW225M	303660	16890
45.00	60.00	CW250S	394660	21951
55.00	75.00	CW250M	439990	24472
75.00	100.00	CW280S	535440	29781
90.00	120.00	CW280M	625940	34815
110.00	150.00	CW315S	731370	40679
125.00	170.00	CW315MX	820400	45631
132.00	180.00	CW315MX	841940	46829
150.00	200.00	CW315MX	919830	51161
160.00	215.00	CW315MX	933080	51898
180.00	240.00	CW355L	1189450	66157
200.00	270.00	CW355L	1217830	67736
225.00	300.00	CW355L	1257230	69927
250.00	335.00	CW355L	1351510	75171
275.00	369.00	CW355L	1455600	80960
300.00	402.00	CW400LX	1622920	90267
325.00	470.00	CW400LX	1804600	100372

Note : Position of Terminal box on RHS when viewed from DE

AC MOTORS

SPDP SLIP RING



(Price List No LTM/006 Rev 1 Dated 17.03.12)

SCREEN PROTECTED DRIP PROOF SLIPRING INDUCTION MOTORS

Enclosure conforming to protection IP 21/23 Horizontal Foot Mounted (B3), continuously rated (S1) suitable for operation on 415+/- 10% V, 3 Phase 50Hz+/- 5% AC supply with ambient 45°C, Class "F" insulation with temperature rise limited to Class "B" and altitude less than 1000 m above m.s.l. conforming to IS 325

OUTPUT		8 POLE : 750 RPM		
KW	HP	FRAME	PRICE	EX.DUTY
3.70	5.00	CW160M	99270	5521
5.50	7.50	CW160L	105730	5881
7.50	10.00	CW180M	145880	8114
11.00	15.00	CW180L	170830	9502
15.00	20.00	CW200M	206700	11497
18.50	25.00	CW200L	217330	12088
22.00	30.00	CW225M	286070	15911
30.00	40.00	CW225M	317570	17663
37.00	50.00	CW250S	400470	22274
45.00	60.00	CW250M	459730	25570
55.00	75.00	CW280S	545750	30355
75.00	100.00	CW280M	596050	33152
90.00	120.00	CW315S	759460	42241
110.00	150.00	CW315MX	821850	45711
125.00	170.00	CW355L	865020	48112
132.00	180.00	CW355L	913450	50806
150.00	200.00	CW355L	1134170	63083
160.00	215.00	CW355L	1277780	71070
180.00	240.00	CW355L	1352390	75220
200.00	270.00	CW355L	1463360	81392
225.00	300.00	CW400LX	1542700	85805
250.00	370.00	CW400LX	1618610	90027

OUTPUT		10 POLE : 600 RPM		
KW	HP	FRAME	PRICE	EX.DUTY
110.00	150.00	CW315MX	1223660	68060
125.00	170.00	CW355L	1579080	87828
150.00	200.00	CW355L	1800090	100121
160.00	215.00	CW355L	1879510	104538
180.00	240.00	CW355L	1959760	109002
200.00	270.00	CW400LX	2274490	126507
225.00	300.00	CW400LX	2513080	139778

Note : Position of Terminal box on RHS when viewed from DE

AC MOTORS

FLAMEPROOF - FOOT MOUNTED



(Price List No LTM/006 Rev 1 Dated 17.03.12)

EFF 2
IS 12615

TOTALLY ENCLOSED FAN COOLED SQUIRREL CAGE FLAMEPROOF INDUCTION MOTORS

Enclosure conforming to protection IP 55 Horizontal Foot Mounted (B3), continuously rated (S1) suitable for operation on 415+/- 10% V, 3 Phase 50Hz+/- 5% AC supply with 45°C, ambient, Class "F" insulation with temperature rise limited to Class "B" and altitude less than 1000 m above m.s.l. conforming to IS 2148 . Motors are suitable for Temperature class T4 .

OUTPUT		2 POLE : 3000 RPM		
KW	HP	FRAME	PRICE	EX.DUTY
0.37	0.50	E80	18660	1038
0.55	0.75	E80	20870	1161
0.75	1.00	E80	21500	1196
1.10	1.50	E90L	24020	1336
1.50	2.00	E90L	26880	1495
2.20	3.00	E90L	33600	1869
3.70	5.00	E100L	42680	2374
5.50	7.50	E112M	60610	3371
7.50	10.00	E132M	66850	3718
9.30	12.50	E132M	95290	5300
9.30	12.50	E160L	117370	6528
11.00	15.00	E160L	117370	6528
15.00	20.00	E160L	142430	7922
18.50	25.00	E160L	162040	9013
22.00	30.00	E180L	191420	10647
30.00	40.00	E200L	258360	14370
37.00	50.00	E200L	335230	18645
45.00	60.00	E225M	423650	23563
55.00	75.00	E250M	520100	28928
75.00	100.00	E280M	696270	38727
90.00	120.00	E280M	721460	40128
110.00	150.00	E315M	867990	48278
125.00	170.00	E315M	1018730	56662
132.00	180.00	E315M	1029130	57240
150.00	200.00	E315L	1130860	62898
160.00	215.00	E315L	1166840	64900
180.00	240.00	E315L	1398910	77807
200.00	270.00	E315L	1747210	97180

OUTPUT		4 POLE : 1500 RPM		
KW	HP	FRAME	PRICE	EX.DUTY
0.37	0.50	E80	18330	1020
0.55	0.75	E80	20230	1125
0.75	1.00	E80	21030	1170
1.10	1.50	E90L	24020	1336
1.50	2.00	E90L	26090	1451
2.20	3.00	E100L	33190	1846
3.70	5.00	E112M	42060	2339
5.50	7.50	E132M	57860	3218
7.50	10.00	E132M	65900	3665
9.30	12.50	E160L	100830	5608
11.00	15.00	E160L	106530	5925
15.00	20.00	E160L	129810	7220
18.50	25.00	E180L	146780	8164
22.00	30.00	E180L	174460	9703
30.00	40.00	E200L	235070	13075
37.00	50.00	E225S	306180	17030
45.00	60.00	E225M	385450	21439
55.00	75.00	E250M	473530	26338
75.00	100.00	E280M	607940	33814
90.00	120.00	E280M	619730	34469
110.00	150.00	E315M	769190	42782
125.00	170.00	E315M	885300	49240
132.00	180.00	E315M	922170	51291
150.00	200.00	E315L	958670	53321
160.00	215.00	E315L	968380	53861
180.00	240.00	E315L	1159130	64471
200.00	270.00	E315L	1395450	77615

Note : Motors in frames E80 to E200L are with Gas Group IIA , IIB.However motors in frames E90L to E200L can be made available with Gas Group I,IIA, IIB on specific request at extra charge.

Motors in frame E225 to E315L are with Gas Group I,IIA, IIB

Motors with Terminal box on top are also available on request.

Motors with E80 and E315L are with TOP terminal box only, balance frames with RHS from DE

Motors for Gas Group IIC are also available on request.with Terminal Box on Top only.

AC MOTORS

FLAMEPROOF - FOOT MOUNTED



(Price List No LTM/006 Rev 1 Dated 17.03.12)

EFF 2
IS 12615

TOTALLY ENCLOSED FAN COOLED SQUIRREL CAGE FLAMEPROOF INDUCTION MOTORS

Enclosure conforming to protection IP 55, Horizontal Foot Mounted (B3), continuously rated (S1) suitable for operation on 415+/- 10% V, 3 Phase 50Hz+/- 5% AC supply with 45°C, ambient, Class "F" insulation with temperature rise limited to Class "B" and altitude less than 1000 m above m.s.l. conforming to IS 2148 . Motors are suitable for Temperature class - T4

OUTPUT		6 POLE : 1000 RPM		
KW	HP	FRAME	PRICE	EX.DUTY
0.37	0.50	E80	21330	1186
0.55	0.75	E80	21830	1214
0.75	1.00	E90L	25430	1414
1.10	1.50	E90L	26230	1459
1.50	2.00	E100L	37930	2110
2.20	3.00	E112M	44090	2452
3.70	5.00	E132M	58480	3253
5.50	7.50	E132M	70800	3938
7.50	10.00	E160L	109580	6095
9.30	12.50	E160L	126630	7043
11.00	15.00	E160L	134210	7465
15.00	20.00	E180L	179340	9975
18.50	25.00	E200L	222990	12403
22.00	30.00	E200L	241910	13455
30.00	40.00	E225M	396630	22061
37.00	50.00	E250M	487070	27091
45.00	60.00	E280M	591880	32920
55.00	75.00	E280M	638460	35511
75.00	100.00	E315M	777430	43241
90.00	120.00	E315M	911640	50705
110.00	150.00	E315L	999510	55593
125.00	170.00	E315L	1182650	65779
132.00	180.00	E315L	1211510	67384
150.00	200.00	E315L	1417730	78854

OUTPUT		8 POLE : 750 RPM		
KW	HP	FRAME	PRICE	EX.DUTY
0.37	0.50	E90L	24970	1389
0.55	0.75	E90L	27040	1504
0.75	1.00	E100L	32700	1819
1.10	1.50	E100L	38080	2118
1.50	2.00	E112M	45680	2541
2.20	3.00	E132M	60370	3358
3.70	5.00	E132M	97690	5434
5.50	7.50	E160L	112160	6238
7.50	10.00	E160L	136810	7609
9.30	12.50	E180L	173900	9672
11.00	15.00	E180L	183170	10188
15.00	20.00	E200L	247610	13772
18.50	25.00	E225S	307410	17098
22.00	30.00	E225M	404600	22504
30.00	40.00	E250M	496920	27639
37.00	50.00	E280M	637700	35469
45.00	60.00	E280M	651250	36223
55.00	75.00	E315M	793500	44134
75.00	100.00	E315M	929380	51692
90.00	120.00	E315L	1017250	56579
110.00	150.00	E315L	1272330	70767

Note : Motors in frames E80 to E200L are with Gas Group IIA , IIB. However motors in frames E90L to E200L can be made available with Gas Group I, IIA, IIB on specific request at extra charge.

Motors in frame E225 to E315L are with Gas Group I, IIA, IIB

Motors with Terminal box on top are also available on request.

Motors with E80 and E315L are with TOP terminal box only, balance frames with RHS from DE

Motors for Gas Group IIC are also available on request. with Terminal Box on Top only.

AC MOTORS

FLAMEPROOF FLANGE & FOOT CUM FLANGE



(Price List No LTM/006 Rev 1 Dated 17.03.12)

EFF 2
IS 12615

TOTALLY ENCLOSED FAN COOLED SQUIRREL CAGE FLAMEPROOF INDUCTION MOTORS- FLANGE (Any Other Mounting than B3)

Enclosure conforming to protection IP 55 . Flange Mounted (Any mounting other than B3), continuously rated (S1) suitable for operation on 415+/- 10% V,3 Phase 50Hz+/- 5% AC supply with 45°C ambient,Class "F" insulation with temperature rise limited to Class "B" and altitude less than 1000 m above m.s.l. confirming to IS 2148 . Motors are suitable for Temperature class T4 .

OUTPUT		2 POLE : 3000 RPM		
KW	HP	FRAME	PRICE	EX.DUTY
0.37	0.50	E80	19210	1068
0.55	0.75	E80	21500	1196
0.75	1.00	E80	22130	1231
1.10	1.50	E90L	24730	1375
1.50	2.00	E90L	27670	1539
2.20	3.00	E90L	34590	1924
3.70	5.00	E100L	43950	2444
5.50	7.50	E112M	62430	3472
7.50	10.00	E132M	68870	3831
9.30	12.50	E132M	98160	5460
9.30	12.50	E160L	120910	6725
11.00	15.00	E160L	120910	6725
15.00	20.00	E160L	146710	8160
18.50	25.00	E160L	166900	9283
22.00	30.00	E180L	201000	11180
30.00	40.00	E200L	271290	15089
37.00	50.00	E200L	352000	19578
45.00	60.00	E225M	444820	24741
55.00	75.00	E250M	546090	30374
75.00	100.00	E280M	731070	40662
90.00	120.00	E280M	757530	42134
110.00	150.00	E315M	911390	50692
125.00	170.00	E315M	1069650	59494
132.00	180.00	E315M	1080590	60102
150.00	200.00	E315L	1187410	66044
160.00	215.00	E315L	1225170	68144
180.00	240.00	E315L	1468850	81697
200.00	270.00	E315L	1834590	102040

OUTPUT		4 POLE : 1500 RPM		
KW	HP	FRAME	PRICE	EX.DUTY
0.37	0.50	E80	18890	1051
0.55	0.75	E80	20820	1158
0.75	1.00	E80	21650	1204
1.10	1.50	E90L	24730	1375
1.50	2.00	E90L	26860	1494
2.20	3.00	E100L	34190	1902
3.70	5.00	E112M	43310	2409
5.50	7.50	E132M	59590	3314
7.50	10.00	E132M	67870	3775
9.30	12.50	E160L	103840	5776
11.00	15.00	E160L	109730	6103
15.00	20.00	E160L	133690	7436
18.50	25.00	E180L	154110	8572
22.00	30.00	E180L	183190	10189
30.00	40.00	E200L	246830	13729
37.00	50.00	E225S	321510	17882
45.00	60.00	E225M	404720	22511
55.00	75.00	E250M	497210	27655
75.00	100.00	E280M	638340	35504
90.00	120.00	E280M	650730	36194
110.00	150.00	E315M	807630	44920
125.00	170.00	E315M	929570	51703
132.00	180.00	E315M	968280	53856
150.00	200.00	E315L	1006610	55988
160.00	215.00	E315L	1016820	56556
180.00	240.00	E315L	1217100	67695
200.00	270.00	E315L	1465230	81496

Note : Motors in frames E80 to E200L are with Gas Group IIA , IIB. However motors in frames E90L to E200L can be made available with Gas Group I, IIA, IIB on specific request at extra charge.
Motors in frame E225 to E315L are with Gas Group I,IIA, IIB
Motors for Gas Group IIC and other motors with Terminal box on top are also available on request.

AC MOTORS

FLAMEPROOF FLANGE & FOOT CUM FLANGE



(Price List No LTM/006 Rev 1 Dated 17.03.12)

EFF 2
IS 12615

TOTALLY ENCLOSED FAN COOLED SQUIRREL CAGE FLAMEPROOF INDUCTION MOTORS- FLANGE (Any Other Mounting than B3)

Enclosure conforming to protection IP 55 . Flange Mounted (Any mounting other than B3), continuously rated (S1) suitable for operation on 415+/- 10% V,3 Phase 50Hz+/- 5% AC supply with 45°C ambient,Class "F" insulation with temperature rise limited to Class "B" and altitude less than 1000 m above m.s.l. confirming to IS 2148 . Motors are suitable for Temperature class T4 .

OUTPUT		6 POLE : 1000 RPM		
KW	HP	FRAME	PRICE	EX.DUTY
0.37	0.50	E80	21980	1223
0.55	0.75	E80	22460	1249
0.75	1.00	E90L	26220	1458
1.10	1.50	E90L	27030	1503
1.50	2.00	E100L	39070	2173
2.20	3.00	E112M	45410	2526
3.70	5.00	E132M	60230	3350
5.50	7.50	E132M	72930	4056
7.50	10.00	E160L	112870	6278
9.30	12.50	E160L	130420	7254
11.00	15.00	E160L	138240	7689
15.00	20.00	E180L	188310	10474
18.50	25.00	E200L	234150	13023
22.00	30.00	E200L	254020	14129
30.00	40.00	E225M	416470	23164
37.00	50.00	E250M	511440	28446
45.00	60.00	E280M	621490	34567
55.00	75.00	E280M	670380	37287
75.00	100.00	E315M	816310	45403
90.00	120.00	E315M	957210	53240
110.00	150.00	E315L	1049480	58372
125.00	170.00	E315L	1241790	69068
132.00	180.00	E315L	1272080	70753
150.00	200.00	E315L	1488610	82796

OUTPUT		8 POLE : 750 RPM		
KW	HP	FRAME	PRICE	EX.DUTY
0.37	0.50	E90L	25740	1432
0.55	0.75	E90L	27840	1548
0.75	1.00	E100L	33710	1875
1.10	1.50	E100L	39240	2183
1.50	2.00	E112M	47040	2616
2.20	3.00	E132M	62200	3460
3.70	5.00	E132M	100600	5595
5.50	7.50	E160L	115520	6425
7.50	10.00	E160L	140910	7837
9.30	12.50	E180L	182570	10155
11.00	15.00	E180L	192330	10697
15.00	20.00	E200L	260010	14462
18.50	25.00	E225S	322790	17954
22.00	30.00	E225M	424830	23629
30.00	40.00	E250M	521760	29020
37.00	50.00	E280M	669580	37242
45.00	60.00	E280M	683810	38034
55.00	75.00	E315M	833170	46341
75.00	100.00	E315M	975870	54278
90.00	120.00	E315L	1068120	59409
110.00	150.00	E315L	1335940	74305

Note : Motors in frames E80 to E200L are with Gas Group IIA , IIB.However motors in frames E90L to E200L can be made available with Gas Group I,IIA,IIB on specific request at extra charge.
Motors in frame E225 to E315L are with Gas Group I,IIA,IIB
Motors for Gas Group IIC and other motors with Terminal box on top are also available on request.

AC MOTORS

FLAMEPROOF - E355LX FRAME



(Price List No LTM/006 Rev 1 Dated 17.03.12)

TOTALLY ENCLOSED FAN COOLED SQUIRREL CAGE FLAMEPROOF INDUCTION MOTORS-

Enclosure conforming to protection IP 55 for frame E355LX, continuously rated (S1) suitable for operation on 415+/- 10% V, 3 Phase 50Hz+/- 5% AC supply with 45°C, ambient, Class "F" insulation with temperature rise limited to Class "B" and altitude less than 1000 m Above m.s.l. conforming to IS 2148 . Motors are suitable for Temperature class T4 .Gas group IIA IIB

OUTPUT		2POLE :3000RPM		
KW	HP	FRAME	PRICE	EX.DUTY
225.00	300.00	E355LX	2184020	121475
250.00	335.00	E355LX	2293220	127549
275.00	370.00	E355LX	2407880	133926
315.00	425.00	E355LX	2528290	140623
325.00	435.00	E355LX	2787430	155037

OUTPUT		4POLE:1500RPM		
KW	HP	FRAME	PRICE	EX.DUTY
225.00	300.00	E355LX	1844620	102598
250.00	335.00	E355LX	1900770	105721
275.00	370.00	E355LX	1944590	108158
315.00	425.00	E355LX	2135390	118770
325.00	435.00	E355LX	2242140	124708

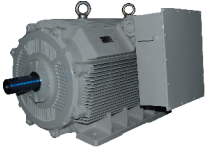
OUTPUT		6POLE :1000RPM		
KW	HP	FRAME	PRICE	EX.DUTY
160.00	215.00	E355LX	1526450	84901
180.00	240.00	E355LX	1663740	92537
200.00	270.00	E355LX	1751310	97408
225.00	300.00	E355LX	1838910	102280
250.00	335.00	E355LX	1949190	108414
275.00	370.00	E355LX	2046660	113835

OUTPUT		8POLE:750RPM		
KW	HP	FRAME	PRICE	EX.DUTY
132.00	180.00	E355LX	1426700	79353
160.00	215.00	E355LX	1620730	90145
180.00	240.00	E355LX	1701770	94652
200.00	270.00	E355LX	1854930	103171

Motors are with Terminal box on top
Motor for gas group IIC also available

AC MOTORS

CRANE DUT



(Price List No LTM/006 Rev 1 Dated 17.03.12)

TOTALLY ENCLOSED FAN COOLED SQUIRREL CAGE & SLIPRING CRANE DUTY MOTORS

MOUNTING : FOOT

VOLTAGE : 415 VOLTS \pm 10%

FREQUENCY : 50 Hzs. \pm 5%

COMBINED : 10% (ABSOLUTE SUM)

PROTECTION : IP 55

RATING : S3/ S4 (AS PER IS 325-1996)

DUTY : INTERMITTENT

INSULATION : CLASS F, TEMP RISE-CLASS B

AMBIENT: 45°C

TEFC CRANE DUTY SQUIRREL CAGE INDUCTION MOTORS

FRAME	4 POLE : 1500 RPM		FRAME	6 POLE : 1000 RPM		FRAME	8 POLE : 750 RPM	
	PRICE	EX.DUTY		PRICE	EX.DUTY		PRICE	EX.DUTY
GD63	9420	524	GD71	10960	610	ND90S	12970	721
GD71	10000	556	ND80	11780	655	ND90L	14620	813
ND80	11120	618	ND90S	12640	703	ND100L	17590	978
ND90S	12260	682	ND90L	14630	814	ND112M	24730	1375
ND90L	13400	745	ND100L	19110	1063	ND132S	32820	1825
ND100L	18070	1005	ND112M	22730	1264	ND132M	51740	2878
ND112M	22650	1260	ND132S	33450	1860	ND160M	63070	3508
ND132S	31200	1735	ND132M	37230	2071	ND160L	82110	4567
ND132M	36460	2028	ND160M	60100	3343	ND180L	116410	6475
ND160M	56810	3160	ND160L	70990	3948	ND200L	164880	9171
ND160L	72390	4026	ND180L	108210	6019	ND225M	240080	13353
ND180M	101200	5629	ND200L	139820	7777			
ND180L	108860	6055	ND225M	219810	12226			
ND200L	145240	8078						
ND225S	188580	10489						
ND225M	228570	12713						

Note : Position of Terminal Box RHS when viewed from DE

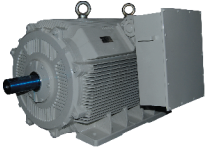
TEFC CRANE DUTY SLIPRING INDUCTION MOTORS

FRAME	6 POLE		FRAME	8 POLE		FRAME	10 POLE	
	PRICE	EX DUTY		PRICE	EX DUTY		PRICE	EX DUTY
NDW112M	57740	3211	NDW112M	61530	3422	NDW112M	-	
DW132S	76040	4229	DW132S	81690	4544	DW132S	-	
DW132M	90870	5054	DW132M	109760	6105	NDW132M	-	
NDW160M	103100	5734	NDW160M	118890	6613	NDW160M	-	
NDW160L	127520	7093	NDW160L	148100	8237	NDW160L	-	
NDW180L	191940	10676	NDW180L	198750	11054	NDW180L	-	
NDW200L	252360	14036	NDW200L	259010	14406	NDW200L	-	
NDW225S	312130	17361	NDW225S	336710	18728	NDW225S	315960	17574
NDW225M	385190	21424	NDW225M	385190	21424	NDW225M	370260	20594
NDW250S	481500	26781	NDW250S	469030	26087	NDW250S	398470	22163
NDW250M	581120	32322	NDW250M	584100	32488	NDW250M	466550	25950
NDW280S	639210	35553	NDW280S	652490	36291	NDW280S	705640	39248
NDW280M	747130	41555	NDW280M	710610	39524	NDW280M	772050	42941
NDW315S	893240	49682	NDW315S	953010	53006	NDW315S	982900	54669
NDW315M	1012780	56331	NDW315M	1034370	57532	NDW315M	1029890	57282

Note : Position of Terminal box on Top .

AC MOTORS

AC TEXTILE MOTORS



(Price List No LTM/006 Rev 1 Dated 17.03.12)

CONFORMING TO EFF-2 LEVEL AS PER 'IS' OR HIGHER

TOTALLY ENCLOSED FAN COOLED SQUIRREL CAGE INDUCTION MOTORS FOR TEXTILE APPLICATIONS
 Enclosure conforming to protection IP 54 Horizontal Foot Mounted (B3), continuously rated (S1) suitable for operation on 415+/- 10% V, 3 Ph 50Hz+/- 5% AC supply with ambient 45°C, Class "F" insulation with temp. rise limited to Class "B" and altitude less than 1000 m above m.s.l. conforming to IS 325 with clean flow construction.

TOTALLY ENCLOSED (TE) SQUIRREL CAGE INDUCTION MOTORS FOR LOOM/WEAVING APPLICATION

TERMINAL BOX ON RHS , 3 LEAD , STAR CONNECTED

OUTPUT		6 POLE -1000 RPM		
KW	HP	FRAME	PRICE	EX.DUTY
0.75	1.00	NR90L	16280	905
1.10	1.50	R112M	18930	1053
1.50	2.00	R112M	21750	1210

OUTPUT		8 POLE -750 RPM		
KW	HP	FRAME	PRICE	EX.DUTY
0.75	1.00	R112M	16610	924
1.10	1.50	R112M	21930	1220
1.50	2.00	R132S	23300	1296

TOTALLY ENCLOSED (TE) SQUIRREL CAGE INDUCTION MOTORS FOR CARD APPLICATION

TERMINAL BOX ON TOP , 3 LEAD , STAR CONNECTED

OUTPUT		6 POLE -1000 RPM		
KW	HP	FRAME	PRICE	EX.DUTY
1.10	1.50	NR112M	12370	688
1.50	2.00	NR112M	22880	1273
2.20	3.00	NR132S	27790	1546

TOTALLY ENCLOSED FAN COOLED SQUIRREL CAGE INDUCTION MOTORS FOR GINNING APPLICATION

TERMINAL BOX ON RHS .

100 FRAME WITH 3 LEAD , STAR CONNECTED & OTHERS , 6 LEAD , DELTA CONNECTED

OUTPUT		4 POLE -1500 RPM		
KW	HP	FRAME	PRICE	EX.DUTY
2.20	3.00	ND100L	17190	956
3.00	4.00	ND112M	22040	1226
3.70	5.00	ND132S	27130	1509
5.50	7.50	ND132S	30730	1709
7.50	10.00	ND132M	35480	1973

CONE MOTOR : EFF1 AS PER IS:12615

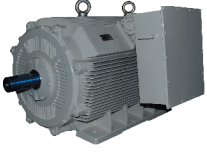
TERMINAL BOX ON TOP , 6 LEAD DELTA CONNECTED

OUTPUT		4 POLE : 1500 RPM		
KW	HP	FRAME	PRICE	EX.DUTY
3.7	5.0	ND112M	24480	1362

EFF 1
IS 12615

AC MOTORS

AC TEXTILE MOTORS



(Price List No LTM/006 Rev 1 Dated 17.03.12)

**RING FRAME, TEXTILE MOTOR : TB TOP, AMBIENT :45 C, RISE 75 C , EFF-1 AS PER IS12615
ROLLER BEARING AT DE FOR 160 FR. AND ABOVE TO SUSTAIN HIGHER RADIAL LOAD**

OUTPUT		4 POLE : 1500 RPM		
KW	HP	FRAME	PRICE	EX.DUTY
3.70	5.0	ND112M	24460	1360
5.50	7.5	ND132S	33540	1865
7.50	10.0	ND132M	39290	2185
9.3	12.5	ND160M	62080	3453
11.0	15.0	ND160M	64020	3561
13.0	17.5	ND160L	77440	4307
15.0	20.0	ND160L	79550	4425
18.5	25.0	ND180M	112060	6233
22.0	30.0	ND180L	119400	6641
30.0	40.0	ND200L	161080	8959
37.0	50.0	ND225S	207130	11521
45.0	60.0	ND225M	251070	13965

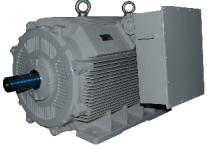
OUTPUT		6 POLE -1000 RPM		
KW	HP	FRAME	PRICE	EX.DUTY
3.70	5.00	ND132S	35710	1986
5.50	7.50	ND132M	39840	2216

TB POSITION : SIDE AVAILABLE ON REQUEST
SUITABLE FOR DRAW FRAMES ,SPEED FRAMES
SPINNING FRAMES AND DOUBLING FRAMES

EFF 1
IS 12615

AC MOTORS

LIFT DUT (DOUBLE CIRCUIT)



(Price List No LTM/006 Rev 1 Dated 17.03.12)

LIFT DUTY (DOUBLE CIRCUIT VENTILATED - DCV) IP23 SQUIRREL CAGE INDUCTION MOTORS

Enclosure conforming to protection IP 23 Horizontal Foot Mounted (B3), continuously rated (S1) suitable for operation on 415+/- 10% V,3 Phase 50Hz+/- 5% AC supply with ambient 45°C, Class "F" insulation with temperature rise limited to Class "B" and altitude less than 1000 m above m.s.l. conforming to IS 7358

OUTPUT		4 POLE : 1500 RPM		
KW	HP	FRAME	PRICE	EX.DUTY
2.20	3.00	NC100L	15650	870
3.70	5.00	NC112M	19980	1111
5.50	7.50	NC132S	26620	1481
7.50	10.00	NC132M	32160	1789

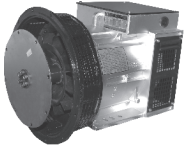
OUTPUT		6 POLE : 1000 RPM		
KW	HP	FRAME	PRICE	EX.DUTY
2.20	3.00	NC112M	20240	1126
3.70	5.00	NC132S	30050	1671
5.50	7.50	NC132M	31320	1742

THRESHER MOTOR

Enclosure conforming to protection IP 54 Horizontal Foot Mounted (B3),continuously rated (S1) suitable for operation on 415+/- 10% V,3 Phase 50Hz+/- 5% AC supply with Class "F" insulation 40°C ambient upto 132 frame, and altitude less than 1000 m above m.s.l. conforming to IS 7358

OUTPUT		4 POLE : 1500 RPM		
KW	HP	FRAME	PRICE	EX.DUTY
3.70	5.00	ND132S	27280	1517
5.50	7.50	ND132M	30270	1684

AL ERNA ORS



(Price List No LTM/006 Rev 1 Dated 17.03.12)

CG Alternators - Brushless Type ---1500 RPM

Screen Protected Drip Proof with enclosure conforming to protection IP 23, Horizontal Foot Mounted (B3), 1500 RPM, 4 Pole, 0.8 PF (lag), Voltage Regulation +/-1%, Single Bearing suitable for operations upto 40 Deg C Ambient Temperature & 1000 mtr altitude , Temp. rise limited to class 'H' limits.

3 Phase, 415 V			
kVA	Frame	Price (Rs.)	Ex. Dut (Rs.)
5	G1R132MR	63215	3672
7.5	G1R132MA	61625	3580
10	G1R132MC	64605	3753
12.5	G1R160S1A	68890	4002
15	G1R160S1B	76545	4447
20	G1R160SB	90435	5254
25	G1R160SC	103015	5984
30	G1R160M2A	117035	6799
35	G1R200SE	125330	7281
40	G1R200SE	136975	7957
45	G1R200SA	148280	8614
50	G1R200SB	153910	8941
63	G1R200SC	181020	10516
75	G1R200MB	198840	11551
82.5	G1R200MD	203030	11794
90	G1R200MDX	239455	13910
100	G1R250SB	240280	13958
125	G1R250SD	267480	15538
140	G1R250MA	291060	16908
160	G1R250MB	319350	18552
180	G1R250LB	332715	19328
200	G1R250LD	357870	20789
250	G1R315SE	417470	24252
275	G1R315SA	444845	25842
300	G1R315SB	475765	27638

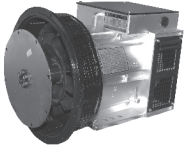
3 Phase, 415 V			
kVA	Frame	Price (Rs.)	Ex. Dut (Rs.)
320	G1R315SB	501690	29144
380	G1R315MB	576620	33497
400	G1R355SB	627345	36444
437.5	G1R355SE	648920	37697
450	G1R355SE	667400	38771
500	G1R355SE	727260	42248
550	G1R355ME	793015	46068
600	G1R355MA	861925	50071
625	G1R355MA	883795	51341
750	G1R400SC	1722345	100054
1010	G1R400MA	2107685	122440

1 Phase, 240 V			
kVA	Frame	Price (Rs.)	Ex. Dut (Rs.)
5	G1R132MA	60745	3529
7.5	G1R160S1E	69080	4013
10	G1R160S1B	77175	4483
12.5	G1R160S2B	90865	5279
15	G1R160S2C	102870	5976
20	G1R160M2A	117590	6831
25	G1R200SF	138715	8058
30	G1R200SA	152660	8868
35	G1R200SC	171590	9968
40	G1R200SD	188475	10949
50	G1R200MDX	239455	13910

110 KVA AND 225 KVA 3 PH ALSO AVAILABLE. PLEASE CHECK WITH WORKS.

These Alternators are also available in Double Bearing Constructions.

AL ERNA ORS



(Price List No LTM/006 Rev 1 Dated 17.03.12)

CG Alternators - Brushless Type ---3000 RPM

Screen Protected Drip Proof with enclosure conforming to protection IP 23, Horizontal Foot Mounted (B3), 3000 RPM, 2 Pole, 0.8 PF (lag), Voltage Regulation +/-1%, Single Bearing suitable for operations upto 40 Deg C Ambient Temperature & 1000 mtr altitude, Temp. rise limited to class 'H' limits.

3 Phase, 415 V			
kVA	Frame	Price (Rs.)	Ex. Dut
5	G1R132MR/2	60490	3514
7.5	G1R132MA/2	61920	3597
10	G1R132MC/2	64920	3771
12.5	G1R160S1A/2	69225	4021
15	G1R160S1A/2	76915	4468
20	G1R160SB/2	90865	5279
25	G1R160SC/2	103510	6013
30	G1R160MA/2	117590	6831

1 Phase, 240 V			
kVA	Frame	Price (Rs.)	Ex. Dut
5	G1R132MR/2	60745	3529
6	G1R132MA/2	64565	3751
7.5	G1R132MC/2	69740	4051
10	G1R160S1A/2	77175	4483
12.5	G1R160SB/2	90870	5279
15	G1R160SC/2	102870	5976

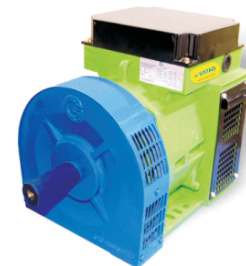
These Alternators are also available in Double Bearing construction.

CG Alternators - Slip Ring Type USTAD Series ---1500 RPM

Screen Protected Drip Proof with enclosure conforming to protection IP 23, Horizontal Foot Mounted (B3), 1500 RPM, 4 Pole, 0.8 PF (lag), Voltage Regulation +/-5%, Double Bearing suitable for operations upto 40 Deg C Ambient Temperature & 1000 mtr altitude, Temp. rise limited to class 'H' Limits.

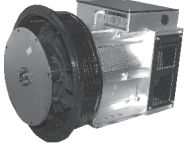
3 Phase, 415 V			
kVA	Frame	Price (Rs.)	Ex. Dut Rs.
5	G2S132MR	32600	1974
6.5	G2S132MR	32850	1990
7.5	G2S132MA	41580	2518
10	G2S132MC	47570	2881
12.5	G2S132MD	52930	3206
15	G2S160S1A	56300	3410
20	G2S160SC	75510	4573
25	G2S160M2A	82530	4998
30	G2S160M2R	92710	5615
32.5	G2S160M2R	95130	5761
35	G2S200SE	100470	6085
40	G2S200SE	107130	6488
45	G2S200SB	118160	7156
50	G2S200SB	122770	7435
63	G2S200SD	148490	8993
75	G2S200MD	165910	10048
82.5	G2S200MD	172020	10418

1 Phase, 240 V			
kVA	Frame	Price (Rs.)	Ex. Dut Rs.
5	G2S132MA	37530	2273
6	G2S132MC	42770	2590
7.5	G2S160S1E	46520	2817
10	G2S160S1B	52930	3206
12.5	G2S160SC	65400	3961
15	G2S160M2A	77130	4671
20	G2S200SE	107020	6482



Slip Ring Alternators are also available in Single Bearing construction with 3% extra charge.

AL ERNA ORS



(Price List No LTM/006 Rev 1 Dated 17.03.12)

Cash Extra's for special Features -- ALTERNATORS

1) Additional Prices for Accessories

Frame	132	160	200	250	315	355
RTD (2 per phase)	Not Offered	Not Offered	Not Offered	10000/-	20000/-	20000/-
BTD Rs. Each	Not Offered	Not Offered	Not Offered	Not offered	10000/-	10000/-
Space Heaters	3000/-	3000/-	4000/-	4000/-	6000/-	7200/-
Thermisters (2 / Phase)	Not Offered	Not Offered	13500/-	13500/-	13500/-	16500/-
Special Epoxy Paint	5000/-	5000/-	6000/-	6000/-	13500/-	16000/-
Radio Suppression capacitor	4400/-	4400/-	4400/-	4400/-	4400/-	4400/-
AVR Suitable for Parallel Operations	1500/-	1500/-	Standard			
AVR Filter	5000					
Short Circuit Maintenance Kit	2400/-	2400/-	6000/-	6000/-	8000/-	8000/-

Note : RTD , BTD, Space Heaters are without controls.

DC injection facility for parallel operation is supplied as standard in alternators of 180 KVA & above.

Parallel operation with QDCT is standard in alternators of 180 KVA & above

Parallel operation without QDCT is standard in alternators of 45 KVA to 160 KVA.

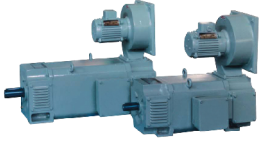
2) Inspection Charges

Type Test	6000/-	6000/-	9600/-	9600/-	12000/-	15000/-
Routine Test	2400/-	2400/-	3600/-	4800/-	4800/-	6000/-

Notes :

- 1) For Prices of other accessories and spares we have separate Price List.
- 2) All prices are valid delivery ex-our godown.
- 3) All Alternators comply with IS 13364, IS 4722:1992 for specifications of rotating electric machines .
- 4) Taxes and duties extra at actual.
- 5) Inspection charges are for standard Alternators .
- 6) Upto 200kVA Alternators are in Aluminium Stator frames.
- 7) For non-standard, marine duty Alternators , please contact our nearest Branch Office.
- 8)The list prices are maximum recommended prices. However, prices lower than this can be charged.
- 9) The list prices are subject to change without prior notice.

DC MO ORS



(Price List No LTM/006 Rev 1 Dated 17.03.12)

Laminated Yoke DC Motors

Screen protected Drp Proof with enclosure conforming to protection IP 23, Horizontal foot mounted (B3), Base speed 1500 RPM, Blower cooled (IC06) suitable for operations upto 40 Degree C Ambient Temperature & 1000 mtr altitude, Insulation class F with temperature rise limited to class 'F' limits for Frame 100S to 132L, Insulation class H with temperature rise limited to class 'H' for Frame 160A to 280M, Armature voltage 440V & Field voltage 220V for frame 100S to 280M

Rated KW	Frame ASBG	List Price Rs.Each	Ex.Dut Rs.
2.2	100S	31330	2943
3.7	100M	32330	3037
5.5	100L	37140	3489
7.5	112M	50160	4712
9.3	132S	55140	5180
11	132S	56410	5299
15	132M	68330	6419
18.75	132L	74450	6994
22.5	132L	75340	7077
30	160A	115820	10880
40	160S	128450	12066
50	160M	145210	13640
56	160M	152710	14345
60	160L	166560	15646

Rated KW	Frame ASBG	List Price Rs.Each	Ex.Dut Rs.
75	180S	205690	19322
80	180S	207100	19454
100	180M	236060	22175
115	200S	258170	24251
135	200M	320170	30075
150	200M	323080	30349
180	225S	382800	35959
210	225M	435640	40922
225	225M	437930	41137
235	250S	525730	49385
280	250S	525860	49397
295	250S	528280	49625
325	250M	556600	52285
400	280S	680990	63969
450	280M	723430	67956

Frames 315 S/M/L also available on requirement

Solid Yoke DC Motors

Degree of protection : IP55

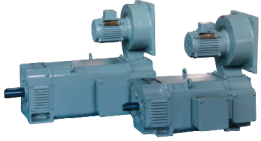
Frame	Nett Price Rs. Each
AES 160U	76860
AES160A	83220
AES160S	99730
AES160M	120700
AFS180U	88940
AFS180A	98460
AFS180S	114350
AFS180M	135300

Frame	Nett Price Rs. Each
AFS225S	182310
AFS225M	222340
AFS225L	244560
AFS225X	280790
AFS280A	343040
AFS280S	360820
AFS280M	414180

Mill Dut DC Motors (Non split Type)

Rated KW	Nett Price Rs.TENV (IP 55)	Nett Price Rs. Force Cooled (IP23)
ABS802	151250	177870
ABS803	187550	215990
ABS804	235950	273160
ABS806	344850	381150
ABS808	405350	457380
ABS810	465850	520910
ABS812	784080	863940
ABS814	929280	1022760
ABS816	1079320	1175220

Mill duty motors are conforming to AISE/IPSS standard



(Price List No LTM/006 Rev 1 Dated 17.03.12)

Cash extras for Special features									
1. Additional Prices for Accessories									
Frame	100	112	132	160	180	200	225	250	280
Shaft Extension	5% of List Price								
DE Flange	3% of List Price								
RTD	Rs.3500/-			Rs.6500/-					
BTD	Not offered			Rs.12000/-					
Thermisters	Rs.1980/-			Rs.3960/-					
Space Heater	Rs.1375/-				Rs.2750/-				
Blower Filter	Rs.4400/-		RS. 6000/-		Rs.10000/-		Rs.14000/-		
2.Inspection Charges									
Routine Test	Rs.2200/-		Rs.3300/-		Rs.5500/-				
T pe Test	Rs.5500/-		Rs.8000/-		Rs.11000/-				

RTD , BTD , Space Heaters and Thermisters are without controls .

NOTES:

- 1) List prices are valid for delivery for delivery ex-godown.
- 2) Excise duty, VAT / Sales Tax, Octroi and other statutory taxes, duties and levies would be charged extra as applicable.
- 3) Prices are subject to change without prior notice.
- 4) The list prices are maximum recommended prices, However, prices lower than this can be charged.
- 5) Condition for sales: The price list is subjected to our standard 'General terms and conditions of Tender and Sale'.
- 6) For more details contact our nearest office.

(Price List No LTM/006 Rev 1 Dated 17.03.12)

TERMS OF SALE :

- 1) This price list supercedes our price list LTM/005
Current price list no LTM/006 Rev 1 Dt 17.03.12 (Revised for change in Excise duty)
- 2) For Prices of other accessories and spares we have separate Price List.
- 3) Refer page for details of cash extra's. For Other pl contact CGL's nearest office .
- 4) Taxes & Duties : The List Prices are exclusive of Excise Duties ,Sales Tax and any other Central ,State or Local Taxes, Octroi and other levies. These will be charged extra at the rates ruling on the date of supply.
- 5) Excise Duty shown in Price List is inclusive of Educational Cess
- 6) Delivery: List Prices are valid for delivery ex-our godown
- 7) Conditions for Sales: The Price List is subjected to our standard 'General Terms and Conditions of Tender and Sale' and prices are subject to revision without prior notice .
- 8) General:
 - a) Due to improvement being made from time, frame si es indicated above are provisional and subject to change without prior notice.
 - b) The list prices are maximum recommended prices. However prices lower then this can be charged.
 - c) The list prices are subjected to change without prior notice
 - d) Motor outputs are given in KW & HP. However KW is binding & HP is approximate
 - e) For more details ,please contact us.



Our All India Service Centre Toll free No : 1800-419-0505

MANUFACTURING UNIT :

<p>AHMEDNAGAR WORKS Unit -I A-6/2 , MIDC, Ahmednagar : 414 111. Phone : 0241-2776150 to 58, 2776208 FAX : 0241-2777800</p>	<p>AHMEDNAGAR WORKS Unit -II B-108/109, MIDC Ahmednagar 414 111 Phone : 0241-277145, 2778534 Fax : 0241-2777162</p>	<p>GOA WORKS- Unit III S-14/15 Colvale Industrial Estate Colvale Barde Goa 403 513 Phone : 0832-2299664 / 66 FAX ; 0832-2299663</p>
---	--	--

Regional sales Offices :

North : 3rd Floor, Express Building, 9-10 Bahadur Shah Jafar Marg Near ITO crossing New Delhi 110 002 Ph: 23460700
East : 50, Chowringhee Road, Kolkata : 700 071., Phone : 033-22829681/ 85
West : Kanjur Marg (E) , mumbai : 400 042. Phone : 022-6755 8632 , 33 , 36 & 67558000
South : 3-A, MGR Salai (K.H. road), Nungambakkam, Chennai : 600 034 . Phone : 044-42247525

Branch Offices

<p>North Lucknow :0522-3018850 / 59 Jalandhar :0181-2223801 , 2459467 Jaipur :0141 -2376919, 2376307</p>	<p>West Ahmedabad :079- 4001200 , 40012201 Indore :0731-2498269 , 2498276 Nagpur :0712-2531271 , 2560870 / 71 Pune :020-25534675 / 77 Raipur : 0771 - 4022215</p>
<p>East Bhubaneswar :0674-2531128,2531429 Patna :0612-2239405 Guwahati :0361-2543830 , 255018</p>	<p>South Bangalore :080-41391931 , 41391908 / 909 Secunderabad :040-40002300 , 40002347 Cochin :0484-2370860 / 63, 2360240</p>

Website : www.cgglobal.com



Crompton Greaves Limited

Regd. Office :
CG House, 6th Floor, Dr. Annie Besant Road, Worli, Mumbai 400 025. India.
W : [.cgglobal.com](http://www.cgglobal.com)